



Improvements to the TIN MODEL in HYPACK 2019

By Ivan Izaak

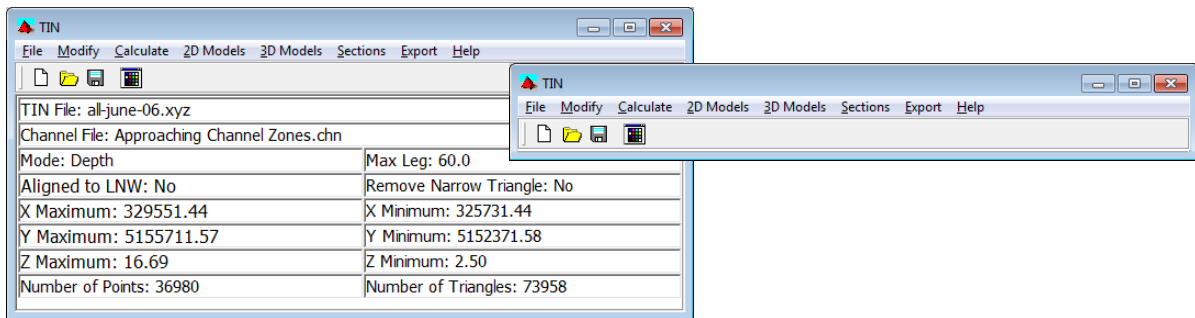
The new HYPACK® 2019 release is underway and there are some improvements to the TIN MODEL program!

MODEL INFORMATION PANEL

This has actually been added in one of 2018 updates. The Information Panel shows the files used, mode and other important information so you do not have to guess what you get!

To **hide the panel**, simply drag the bottom of the frame up to the toolbar.

FIGURE 1. Information Panel in TIN MODEL (left), Hidden Information Panel (right)

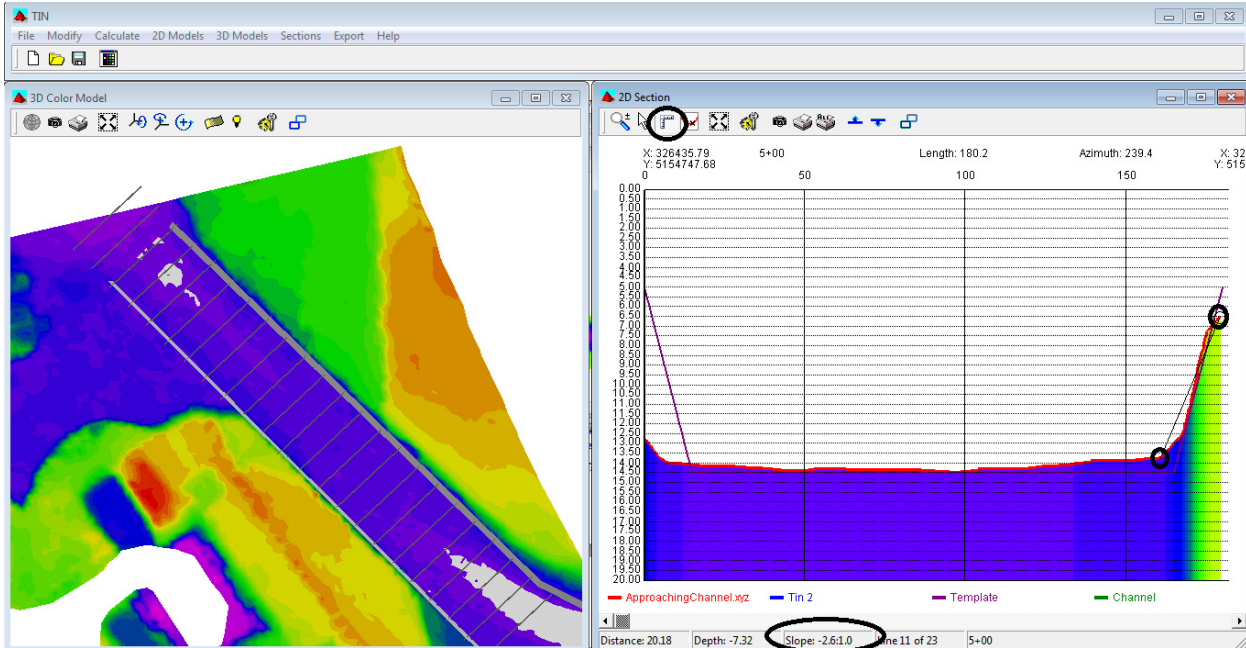


SLOPE MEASUREMENT

A new option in the 2D Section window (SECTIONS – 2D) now allows you to measure the slope. Just click the measure icon then drag the cursor along the slope. The status bar displays the change in the horizontal and vertical position, and the slope between the start point and the current cursor position.



FIGURE 2. Measuring the slope between two points. Black circles show the start and end points, and the slope is 2.2 : 1. (Remember, it is the ratio between horizontal and vertical distances)



FIXED COEXISTENCE OF THE CHANNEL (CHN) AND GEOTIF FILES IN 3D MODELS

In previous versions, if you displayed a channel file and superimposed a GeoTif on the bathymetry model, the channel would disappear when you extended the TIF beyond the TIN surface (TIN Surface option unchecked).

FIGURE 3. View Parameters Superimposing the TIF.

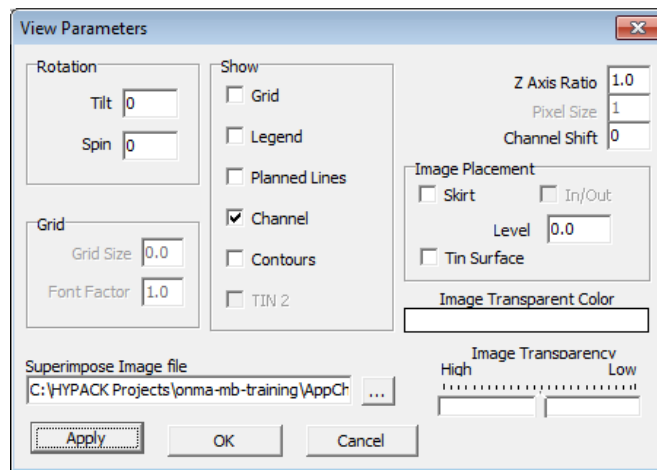


FIGURE 4. 3D Color Model with the GeoTIF and CHN files on it. No CHN is displayed in 2018

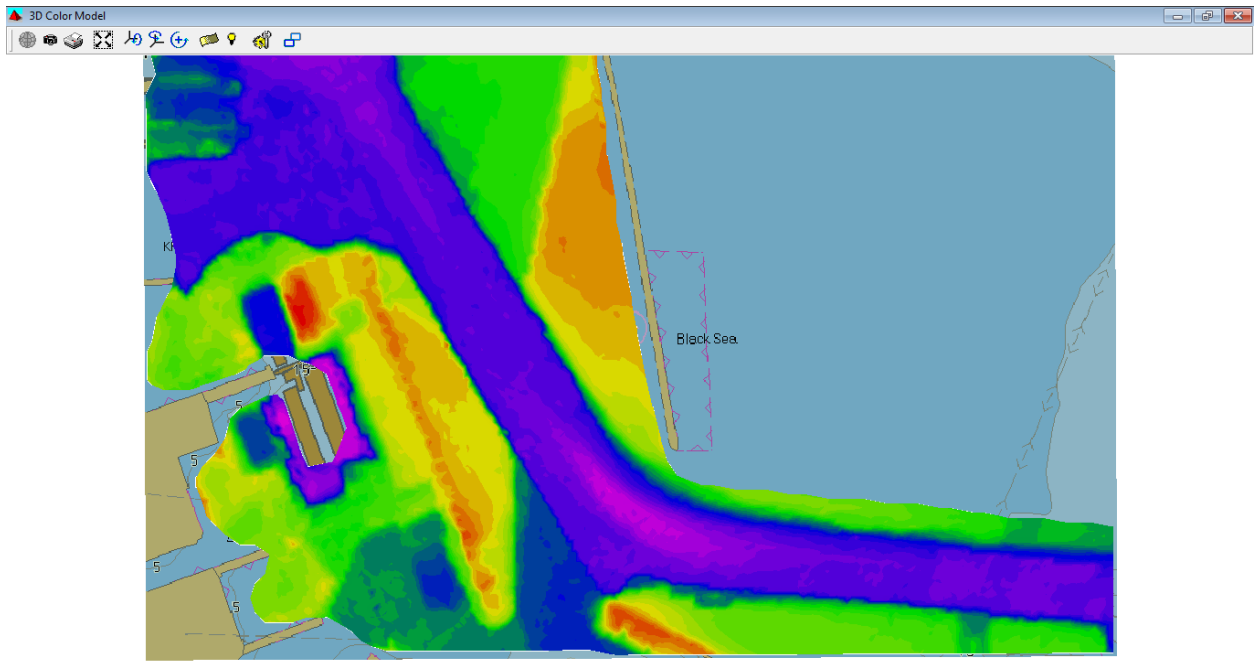


FIGURE 5. 3D Color Model with the GeoTIF and CHN files on it. CHN is correctly displayed in 2019

