



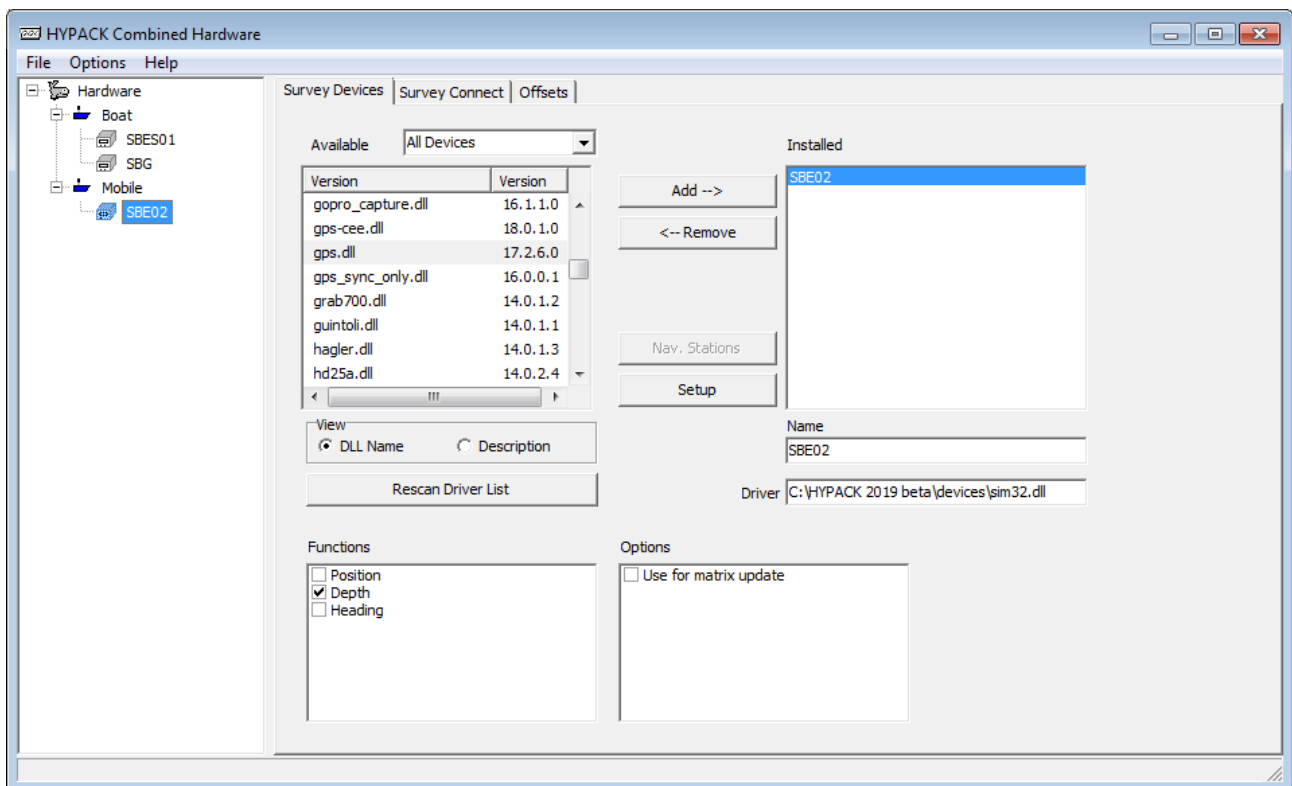
Adding a Single Beam Echosounder Display

By Ivan Izaak

HYPACK SURVEY has just one echosounder display available from the WINDOW-NEW-DEVICE menu. But what if you have two single beam echosounders (SBEs) and would like to see the data from both sonars in the graphs? Well, if you have one of the nice sonars that sends you the full acoustic data (for example, Odom CV3 or Kongsberg EA440), you can display their own displays embedded into corresponding HYPACK drivers. But, in most cases, you may only have simple sonars that only send standard NMEA0183 messages (DBS / DBT). Here is how to setup HYPACK SURVEY to display them both:

1. **Add a new mobile into your HARDWARE** and assign the second SBE to this second mobile. In Figure 1, you can see that I have an SBG IMU sensor and a single beam echosounder that only sends NMEA messages to HYPACK®.

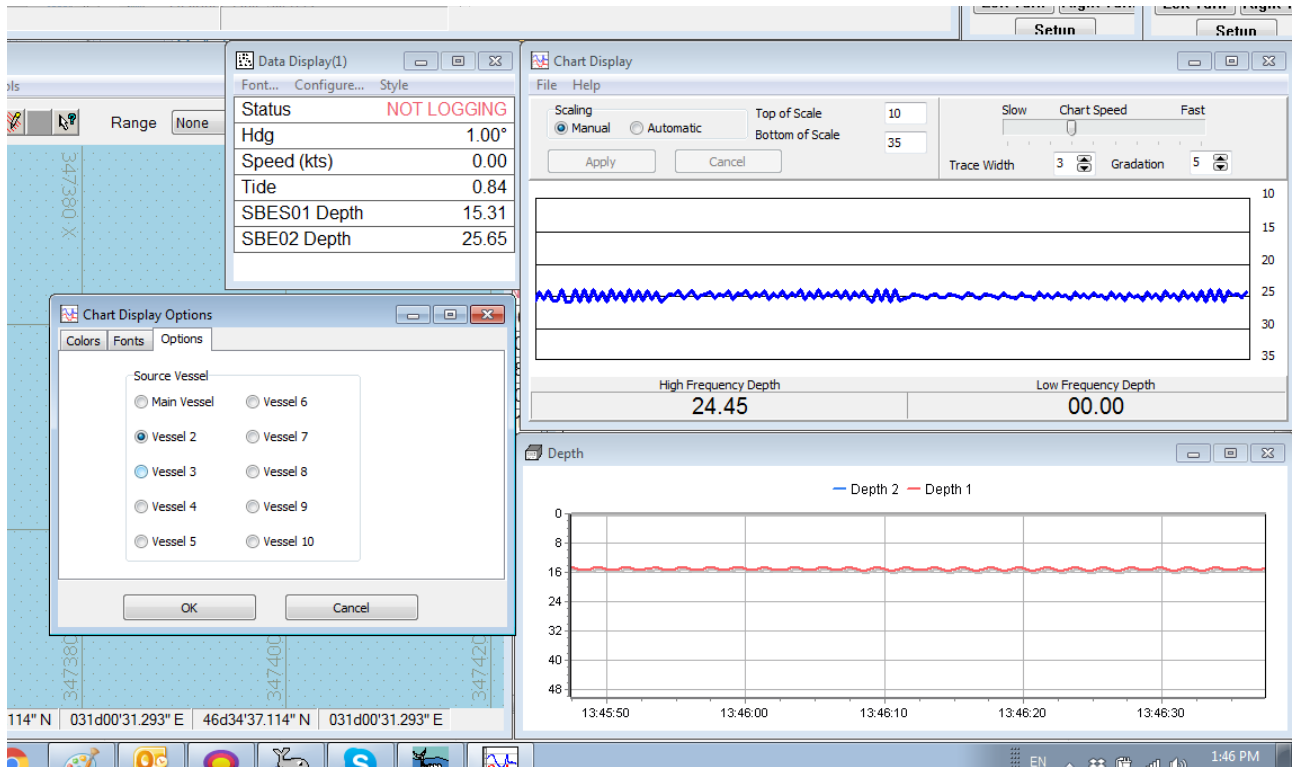
FIGURE 1. The main boat with the positioning and the first SBE, and the second mobile with just the second echosounder..



2. **Run HYPACK® SURVEY as usual.**
3. **Open the soundings graph for the sonar installed on the main mobile.** Select WINDOW-NEW-DEVICE-ECHOSOUNDER DISPLAY.

4. **Configure the second display.** Here is the trick: In the C:\HYPACK 201x folder, there is the EchoDisplay.exe program that we will need.
 - a. **Run this EchoDisplay.exe from Windows Explorer.** (Double-click on the file name.) The Chart Display program should appear (see Fig. 2).
 - b. **Select FILE-SETTINGS and, in the Options tab, select the second mobile to display its depth information as shown in the Fig. 2.**

FIGURE 2. Configuring the Chart Display Window



- c. **Set up necessary view options as you prefer.**
5. **Go surveying!**