



HYPACK CLOUD: Changing the Z Level of Background Charts

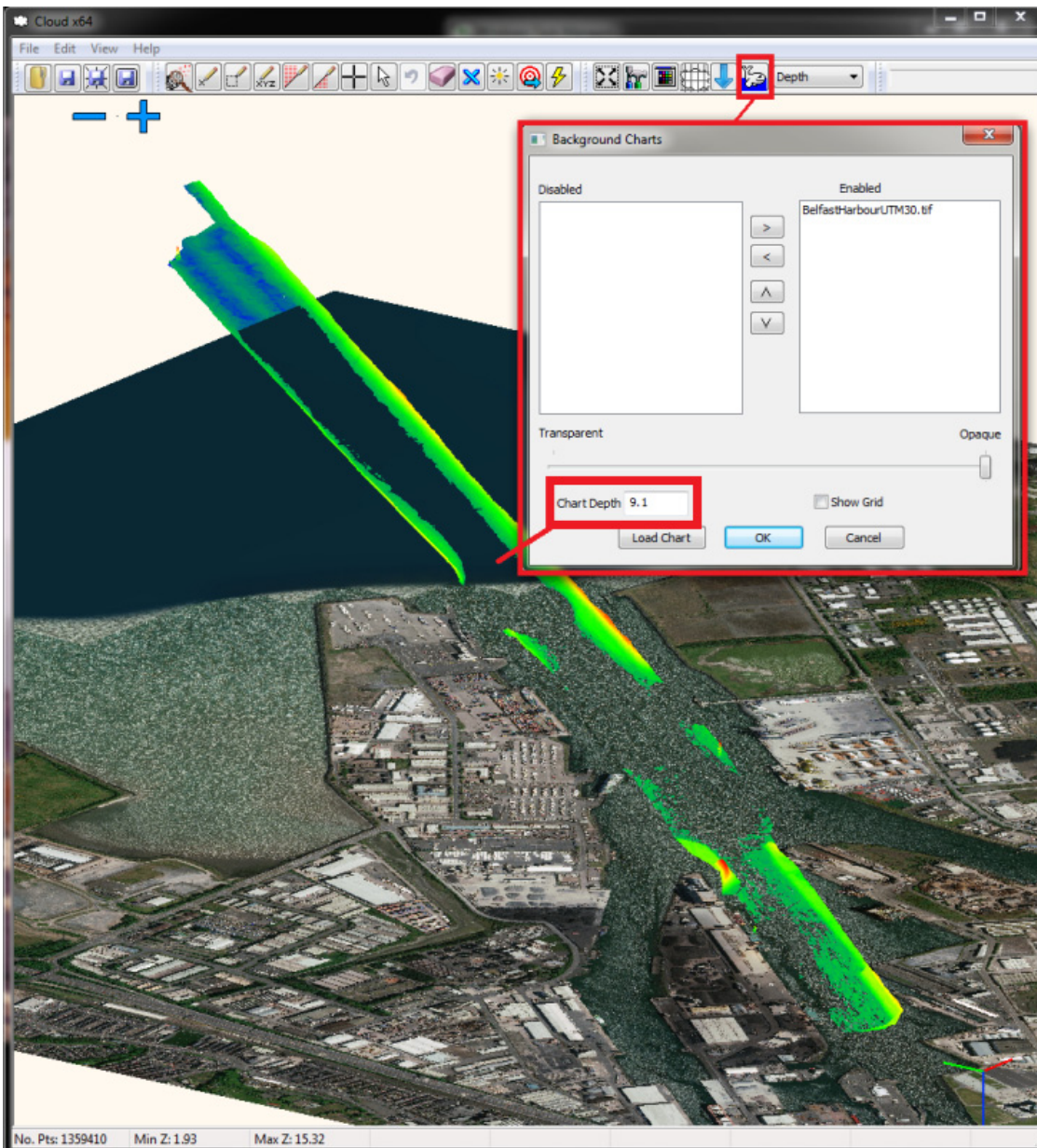
By Christian Shaw

When overlaying bathymetry with a background in HYPACK CLOUD, it is sometimes helpful to overlay the background at an elevation that does not obscure the display of the sounding data. This can be helpful in situations where dredging is required to show how much material is above a certain level.

FIGURE 1. Chart Depth = 12



FIGURE 2. Depth = 9.1



The critical depth is the minimum depth that should be in the channel. For this harbor, the critical depth was 9.1. In the following example, the Chart Depth for the TIF is set to 9.1 and everything in the XYZ file greater than 9.1 is displayed above the TIF level. You can add as many background charts as you would like.

FIGURE 3. TIF, CHN and a DWG file all Drawn to the Screen with the Background Chart Z-Level Reference

