

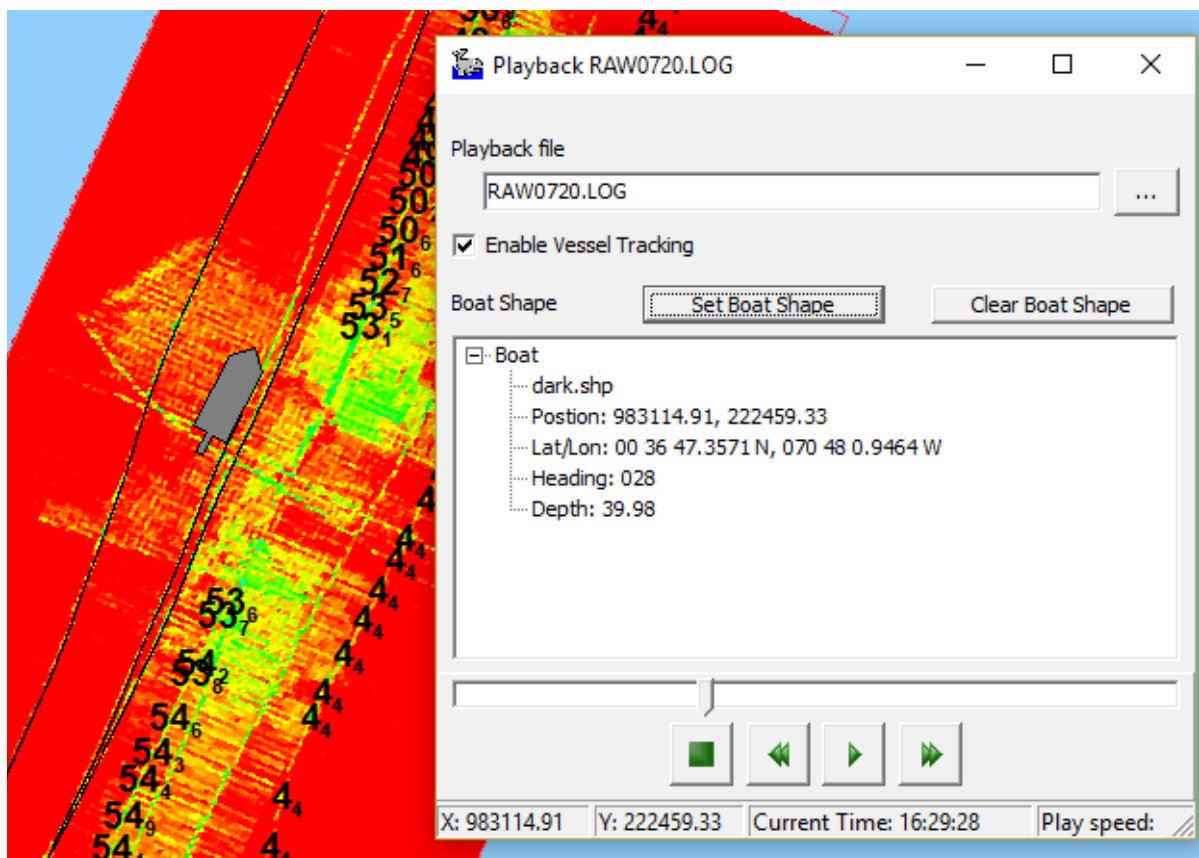


## Playback in the HYPACK® Shell

by Ken Aiken

A new tool in the HYPACK® Shell is the ability to playback your RAW files on screen. It can load a single RAW file, or a catalog (\*.LOG) of RAWfiles, and your HARDWARE settings to display your vessel(s) and recreate their travel along the trackline in the Map window, drawing a temporary trackline along the way.

*FIGURE 1. Raw File Playback*



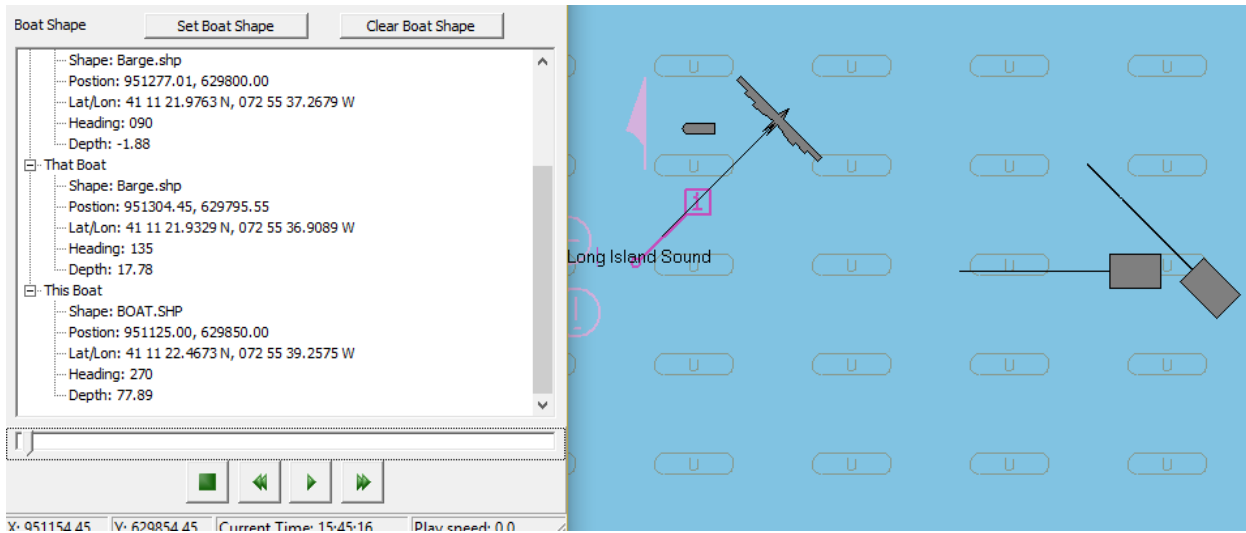
1. **Launch the Raw Playback control dialog.** Select VIEW > PLAYBACK. The program automatically reads your HARDWARE settings and loads each vessel, the attached devices and any selected boat shape. If there is no assigned boat shape, it displays a black circle at the vessel position.
2. **Select the playback data.** Click the open button and select a single RAW file or a LOG of RAW files.

**NOTE:** RAW Playback does not support HSX files.

3. **Change the boat shapes, as desired.** (Optional)

- > **To assign a boat shape to an individual boat**, select the mobile in the tree view display, click [Set Boat Shape] and select your boat shape (\*.SHP) file.
- > **To set all mobiles to the same boat shape**, just click [Set Boat Shape] and select your boat shape (\*.SHP) file.
- > **To remove boat shapes**, use [Clear Boat Shape] in the same manner.

**FIGURE 2. RAW Playback**



4. **Run the playback using playback controls:** Stop, rewind, play/pause, fast forward and the slider.

- > The **Fast-forward button** enables you to playback at up to 64 times the original speed, doubling the playback speed with each click. The current speed appears in the status bar.
- > The **slider** provides manual control.
- > **Enable Vessel Tracking** centers the vessels in the Map window.

