



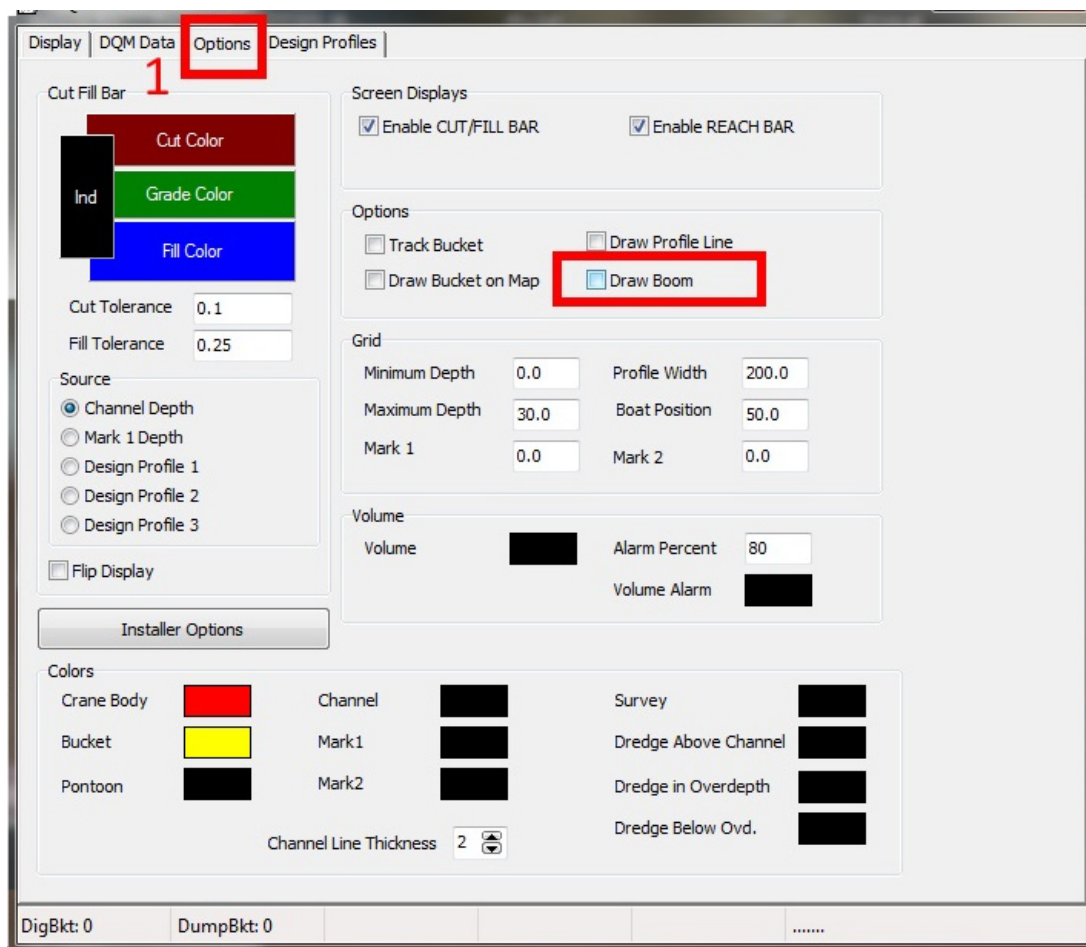
## Draw Boom Feature in the DQM Mechanical Driver

By Bob Glover

We have recently enabled a new option in the DQM Mechanical driver that draws the boom connection between the crane body and the bucket. This eliminates the need to install the mobile connect driver in the HARDWARE setup. This driver will be included in the HYPACK® 2019 release, and is also backwards compatible with HYPACK® 2017 and 2018.

1. From the DQM profile window, select the Options tab.
2. In the Options box, check the Draw Boom option.

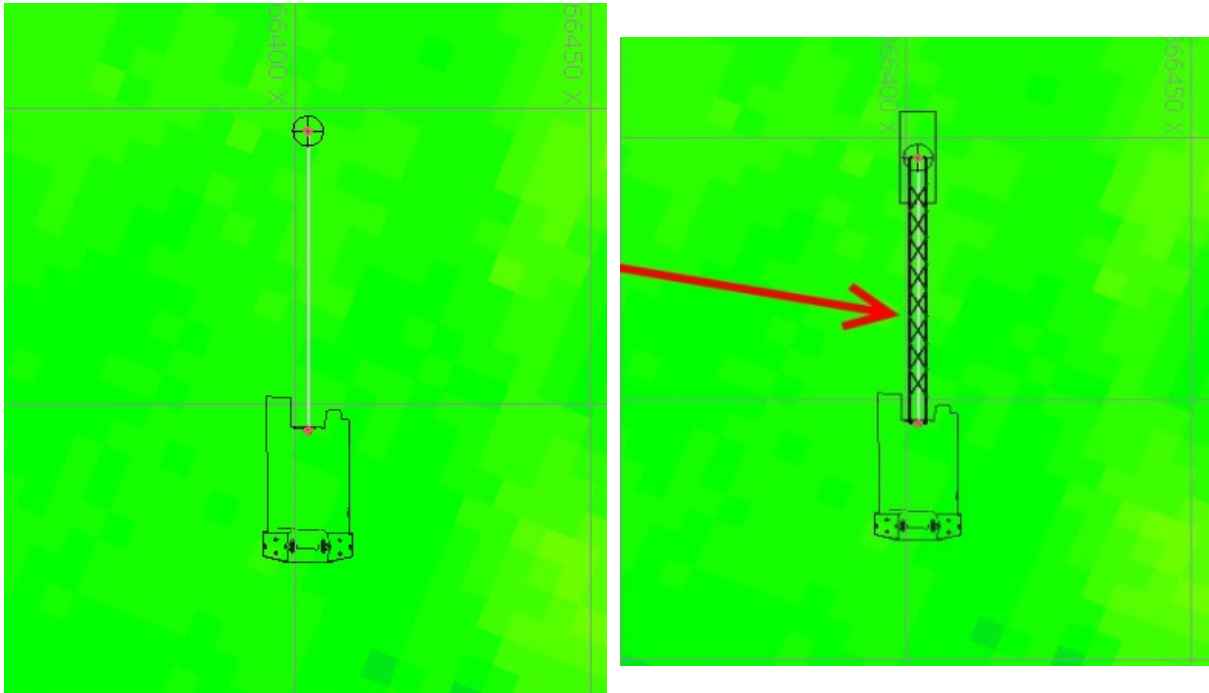
*FIGURE 1. The Setup for Displaying the Boom Connection.*



---

**FIGURE 2.** DREDGEPACK® Map Window—Boom Not Drawn (left), Boom Drawn With the Bucket (right).

---



The driver includes additional display options:

- **Track Bucket** keeps the bucket constantly within the Profile window.
- **Draw Bucket on Map** draws the bucket size entered in the bucket parameters drop-down menu.
- **Draw Profile Line** draws a vector from the boom pin thru the bucket.

Should you have any questions or would like a copy of this driver, please contact [Help@HYPACK.com](mailto:Help@HYPACK.com) for further information.