



HYPACK® Sub-Bottom File Playback Support

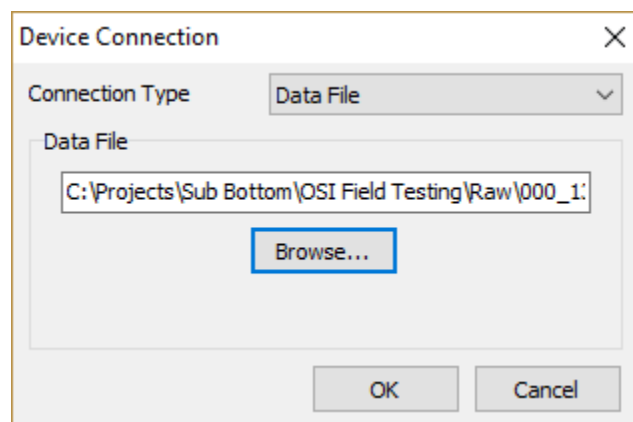
By Daniel Tobin

The latest sub-bottom driver supports file playback, and is available in our Reduced Sub-Bottom package. With this latest change, many opportunities are opened to you. For example, a sub-bottom manufacturer can use this to demonstrate how their data is presented to during data acquisition.

If you wish to enable file playback, follow these instructions:

1. **In HARDWARE, add the Sub-Bottom Driver to your devices.**
2. **In the Survey Connect tab, click the [...].** The Device Connection dialog appears.

FIGURE 1. Device Connection Dialog



3. **Select “Data File” as the Connection Type.**
4. **Click [Browse], select your input data file and click [OK].**

Now, when you run SURVEY, you will see your data playing back as when you captured it. You also get a set of controls to pause, seek, and restart the playback, as well as to change the playback file.

FIGURE 2. Sub-bottom Playback

