

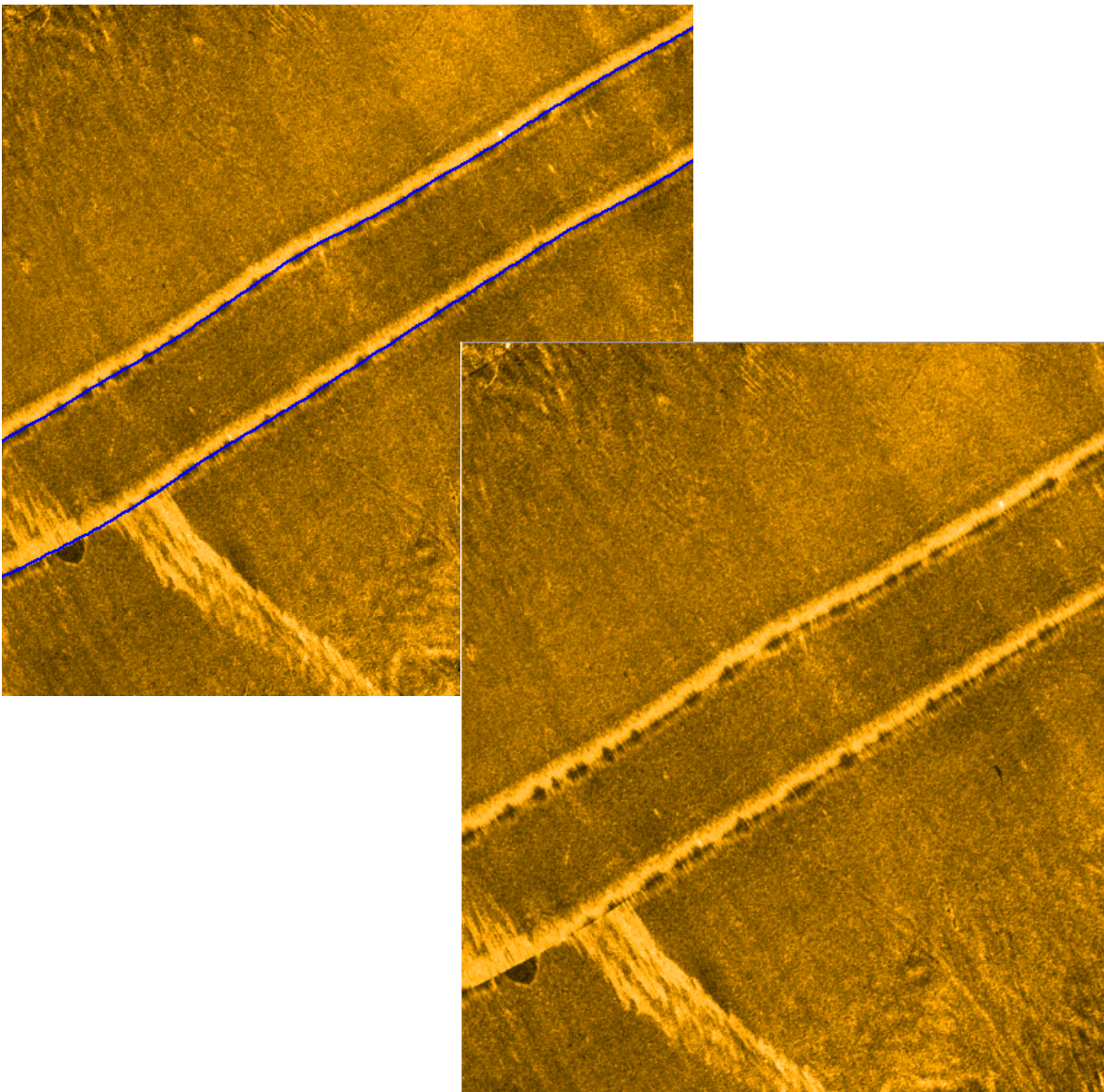


## Nadir Blanking in Side Scan Targeting and Mosaicking

By Daniel Tobin

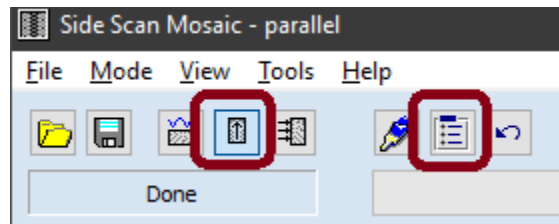
In some datasets, the signal return near the nadir can appear overly bright. This can create bright streaks in the final output image:

**FIGURE 1.** *Nadir Returns Appear Bright in the Mosaic Output —With Track Lines (left) and Without Track Lines (right)*

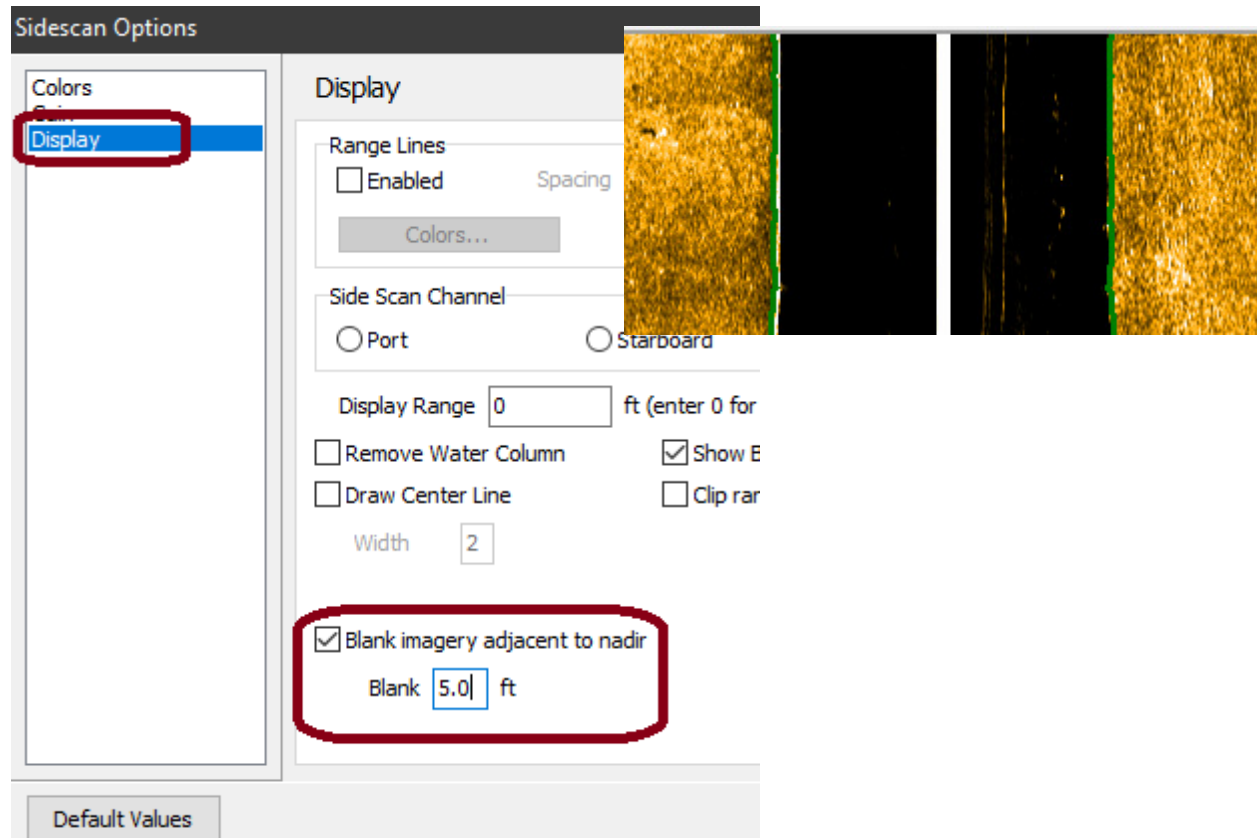


Side Scan Targeting and Mosaicking can mitigate this issue:

1. Enter Stage 2 of TARGETING AND MOSAICKING.
2. Open Side Scan Controls.
3. Select Display along the left side.
4. Enable “Blank imagery adjacent to nadir” and enter the distance you wish to blank.  
In Stage 2, the blanked area will be marked with a green line.



**FIGURE 2.** Blanking the Imagery Adjacent to Nadir—Side Scan Options (left), Resultant Display (right)



**NOTE:** if you have “Show Bottom Tracking” enabled, the bottom track and nadir blank lines may overlap or appear very close to each other. Also note, since Stage 2 isn’t slant range corrected, the nadir blanking may appear very close to the bottom.

---

**FIGURE 3.** *Final image with Nadir Blanked:*

---

