



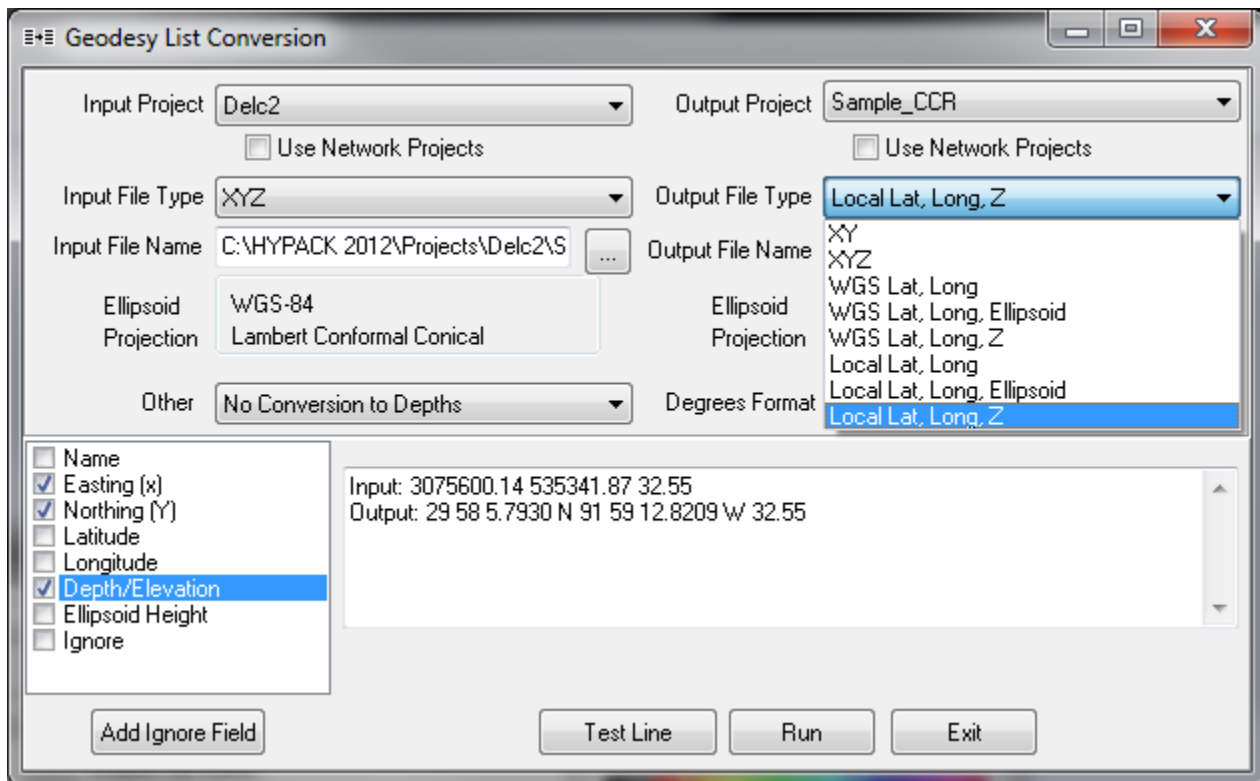
Geodesy List Conversion

By Ken Aiken

In 2012 there will no longer be the Universal Import Program. In its place, there are import options in the Line Editor, Border Editor, Target Editor and in Manual Tides. To replace the XYZ import is the Geodetic List Conversion program located in Utilities > Geodesy.

Geodesy List Conversion reads XY or Lat, Lon data and converts it to an XY or Lat, Lon of different or like geodetic parameters. In addition, there is the choice to read, convert, and output depth or ellipsoid in the conversion.

FIGURE 1. Geodesy List Conversion



To do a conversion:

1. **Select the input project.** This will set the geodesy for the data input.
2. **Select the input type:** XY, XYZ, WGS or Local Lat Lon, with Ellipsoid, depth or neither. The file doesn't need to be in this format exactly, but these are what will be used to create the output file.
3. **Do the same for the output file.**
4. **Indicate whether you need to convert the depth units.** You can convert from meters to feet or feet to meters.
5. **Select the degrees format.**
6. In the lower left corner, **set what data is being read and in what order they appear** in the input line. Click the check box to enable an item then click and drag the items in the box to set the order.

7. **Test your settings.** Click on [Test Line]. The results from converting the first line in the input file is displayed in the dialog. If the results are incorrect, recheck your settings and retest.
8. **When your test results are correct click [Run]** to convert all of the records from the input file.

FIGURE 2. Simple Meters-to-Feet Conversion—Before (left) and After (right)

