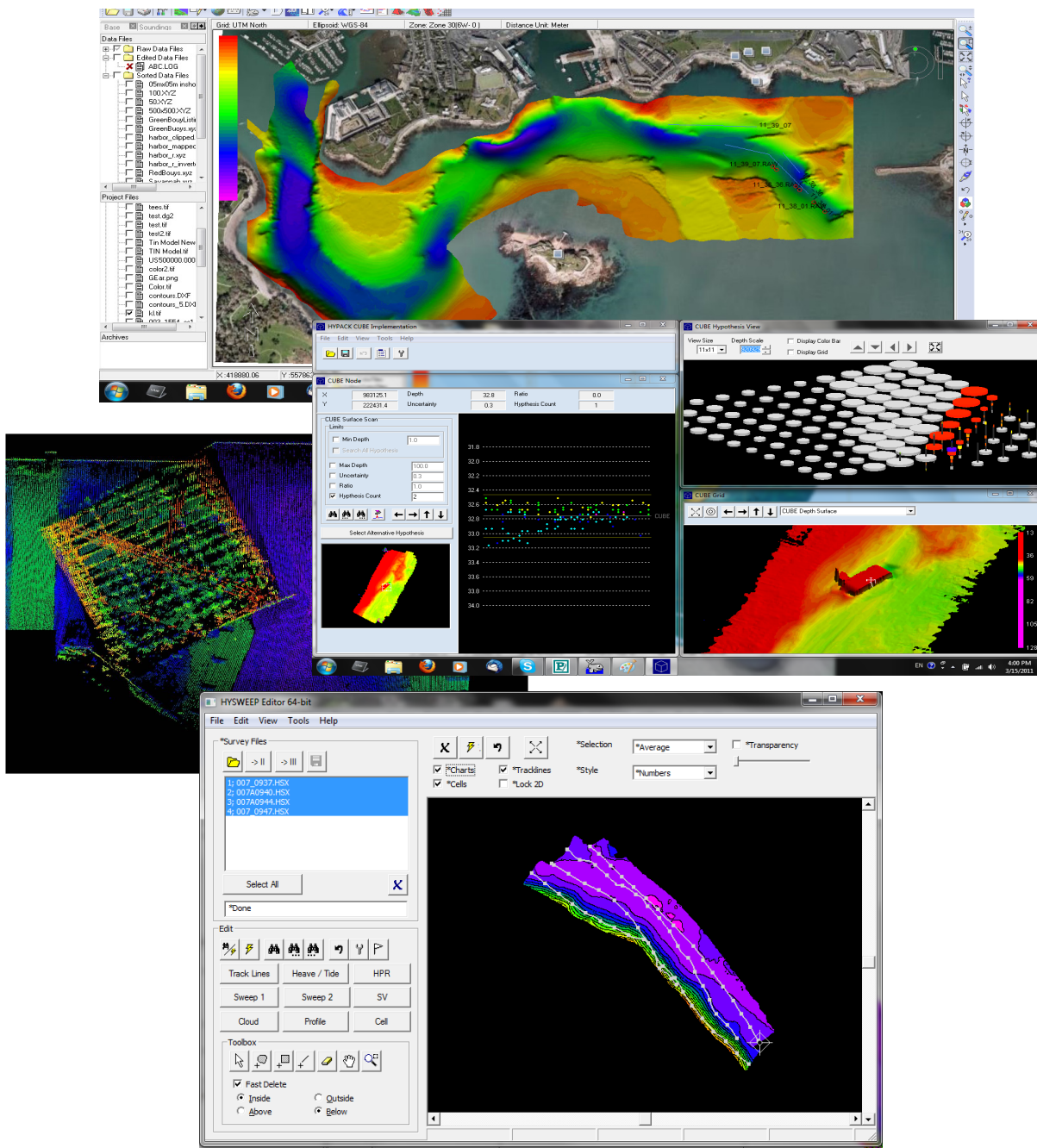




# HYPACK® 2012 Preview

by Lourdes Evans



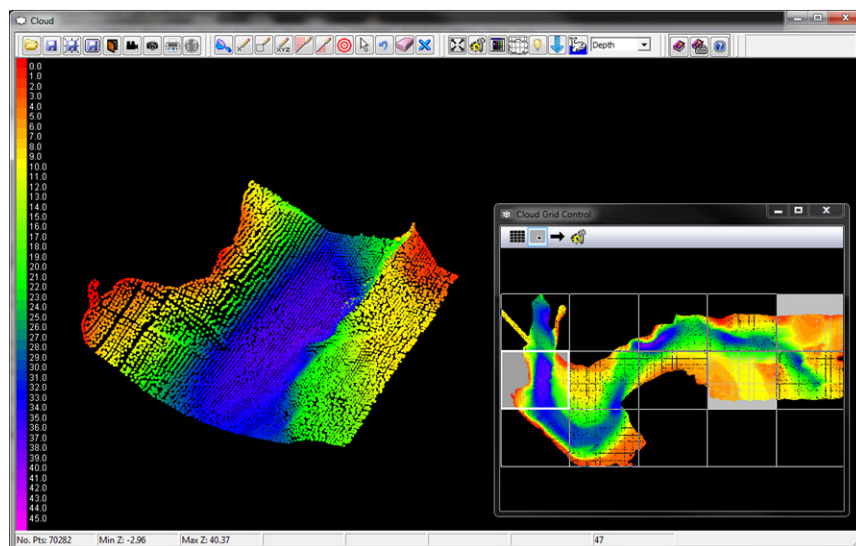
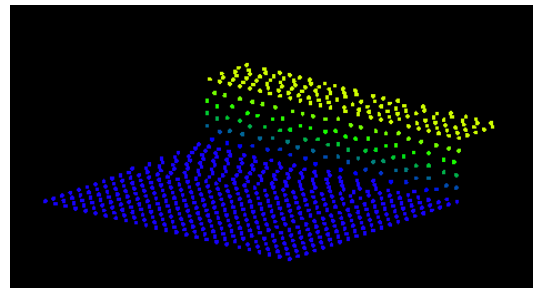
**HYPACK® 2012** will be introduced at our annual HYPACK 2012 Training conference in January of 2012.

**HYPACK® 2012** represents a year of improvements to our previous version, HYPACK® 2011. Many of the changes in HYPACK® come from customers' requests or suggestions.

---

The major developments in HYPACK® 2012 are our 64-bit versions of CLOUD, SORT, MAPPER and the HYSWEEP Editor; and our HYPACK® Viewer. All 64-bit modules are also available in 32-bit. (You must have a 64-bit computer to run the 64-bit programs.)

**HYPACK® and CLOUD as Viewer:** In the 2012 release, the HYPACK® SHELL and CLOUD will operate like a viewer when no dongle is present. This allows your clients to view survey results, though they may not make any changes. Just e-mail your XYZ data and the CLOUD program to your client will be able to visualize the data on their computer.

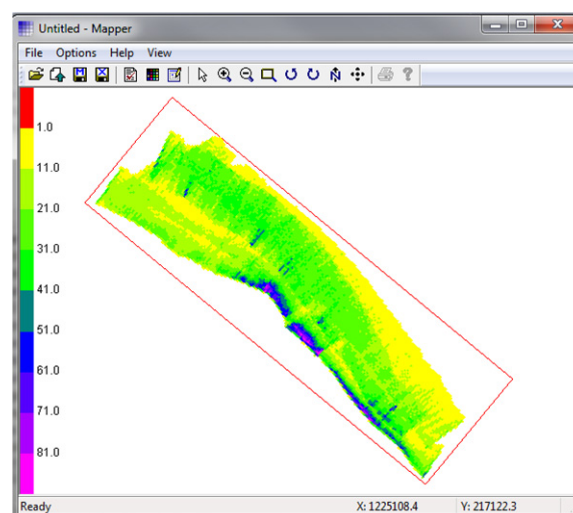


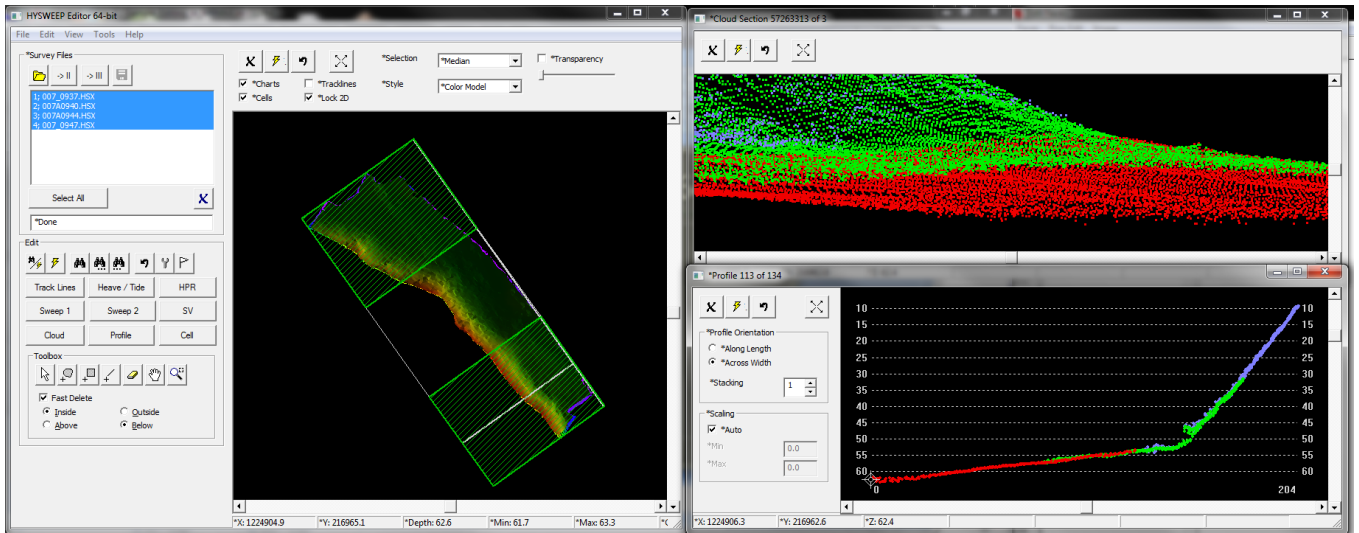
**CLOUD** The HYPACK® 2012 versions of CLOUD (32- and 64-bit) can generate grid areas and examine the data points that fall into each grid. The Grid Control Window is shown in the bottom right-hand side of this screen capture.

**MAPPER**(32- and 64-bit) has an improved interface and a lot of differences ‘behind the scenes.’ It also now exports to an SQLite database file which allows you to query the data exported from your matrix.

**Our new HYSWEEP® EDITOR** is not ready for the January release, but will be released later in 2012. It is our 4th generation of the multibeam editor. In addition to 64-bit capabilities, it will offer many improvements based on feedback from multibeam surveyors and processing technicians. Some of the enhancements of new editor include:

- Expanded memory access which allows for loading larger files.
- CLOUD incorporated into Stage 3.
- New and improved spike filter.
- Displays an unlimited number of beams per ping.





### Additional features in HYPACK® 2012

- A new, real time 3D MTX Display in SURVEY,
- A new SORT program that handles vertical surfaces
- A new Rig Move Driver

The **HYPACK® 2012** release CD will be distributed to all users subscribed to our HYPACK Maintenance Plan and it will also become available for downloading in our website. For additional information on HYPACK® you can visit [www.hypack.com](http://www.hypack.com) or contact [sales@hypack.com](mailto:sales@hypack.com). To check your Maintenance Plan status or to renew it, please contact [mp@hypack.com](mailto:mp@hypack.com).