



HYPACK
a xylem brand

Sounding Better!

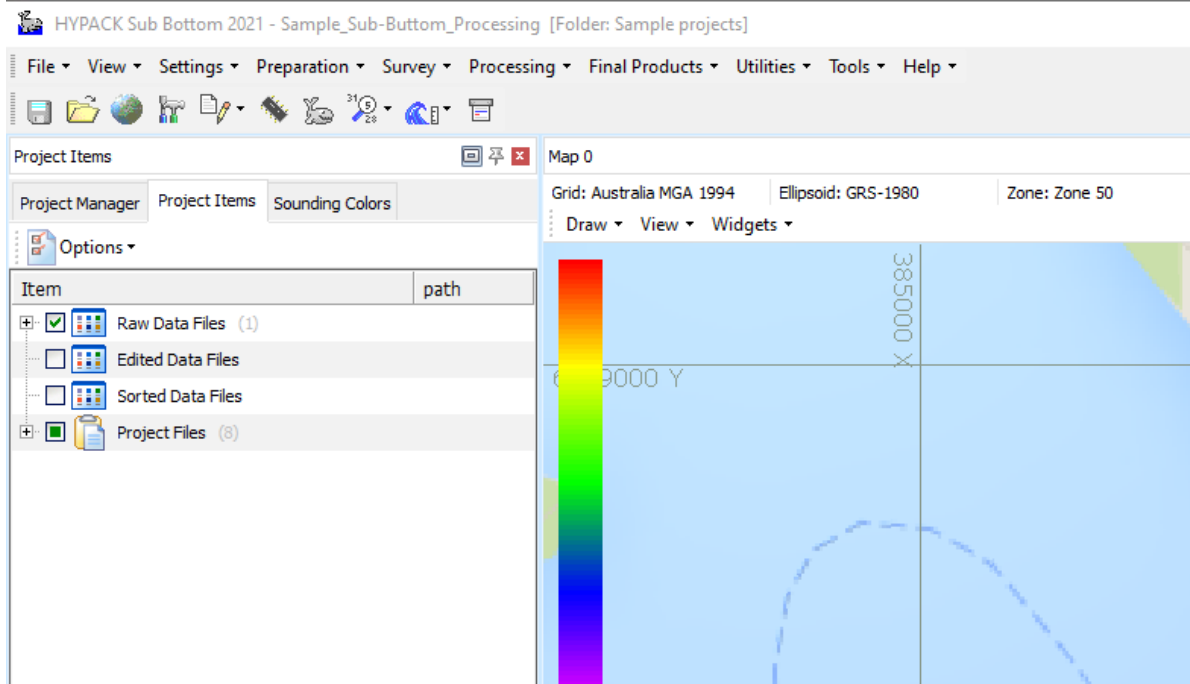
HYPACK Toolbar Layouts

By Boris Schulze

HYPACK® 2021 introduces a new way of switching the Graphical User Interface (the GUI). Many of our customers do have several different licenses as Sub-bottom, MAX or UltraLITE, and switch between them, depending on the survey type. In these reduced versions, some features are disabled. (That is why they are cheaper.) As it is disturbing to see all the disabled (greyed out) features and have a cleaner, easier interface, we introduced user interfaces for the different versions. This feature was already implemented in the previous version, but we have now improved it a bit.

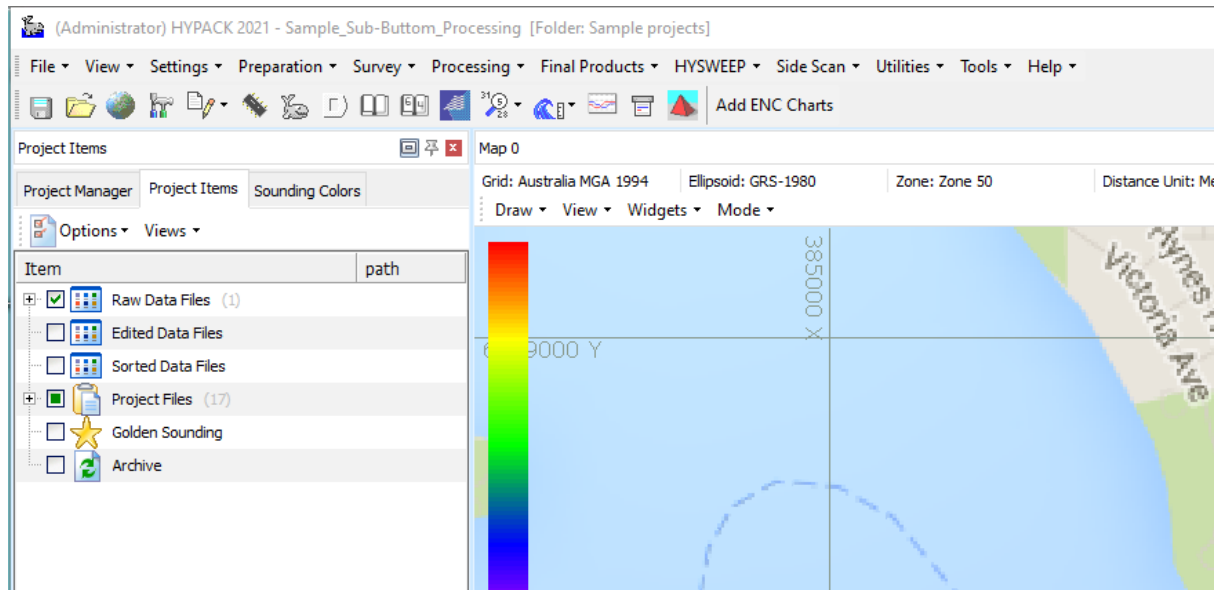
Normally HYPACK® detects the key that is inserted and loads a predefined Menu layout, showing only enabled features. When a Sub-bottom key is plugged in, for example, HYPACK® starts with a reduced menu, which only shows enabled features.

[HYPACK® Sub-bottom Interface](#)

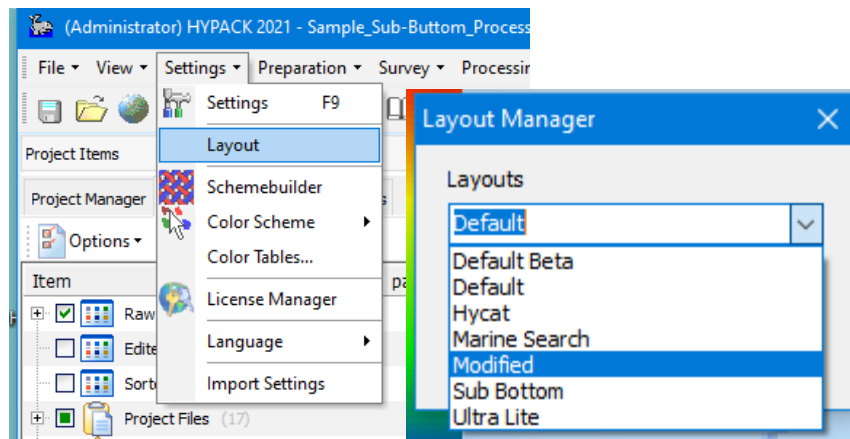


Customers who are using HYPACK® Max see the full menu.

HYPACK® Max Interface

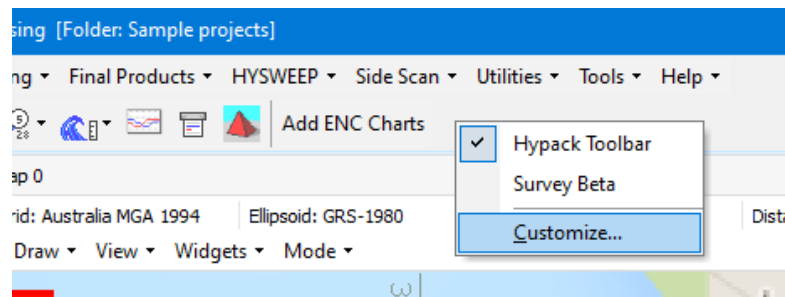


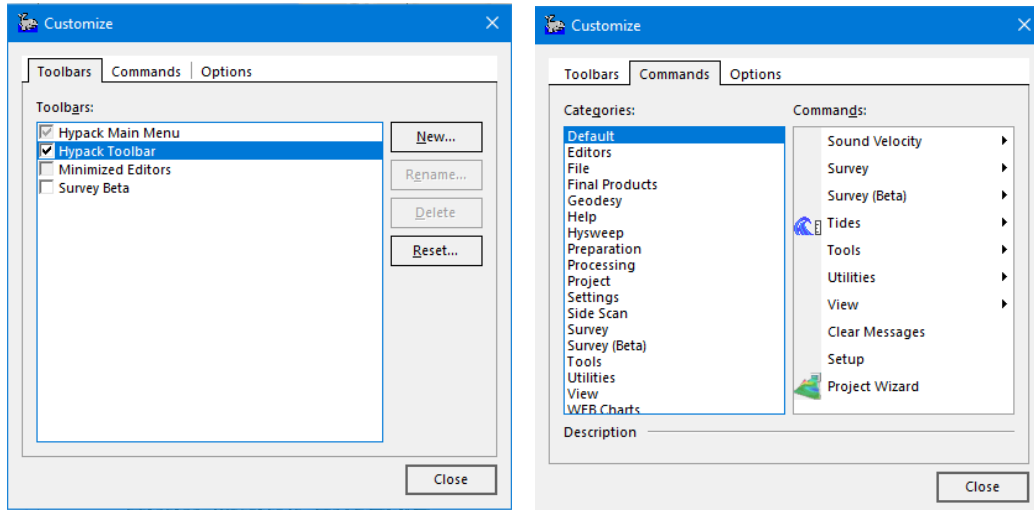
MAX additionally allows you to configure your menu. The Layout Manager (SETTINGS – LAYOUT) allows you to choose a predefined menu or even load your own adjusted menu (Modified).



To adjust the toolbar,

1. **Right-click on the toolbar and select "Customize".** This opens the Customize dialog that allows you to adjust the toolbars and the commands.





2. **To add a command to the menu**, just click and drag it to the toolbar.
3. **Save your modified toolbar.** Go back to Layout Manager and choose “Modified” and “Save”. Now you have your own adjusted Toolbar.

Stay healthy!

Boris

Boris@hypack.com