



**HYPACK**  
a xylem brand

Sounding Better!

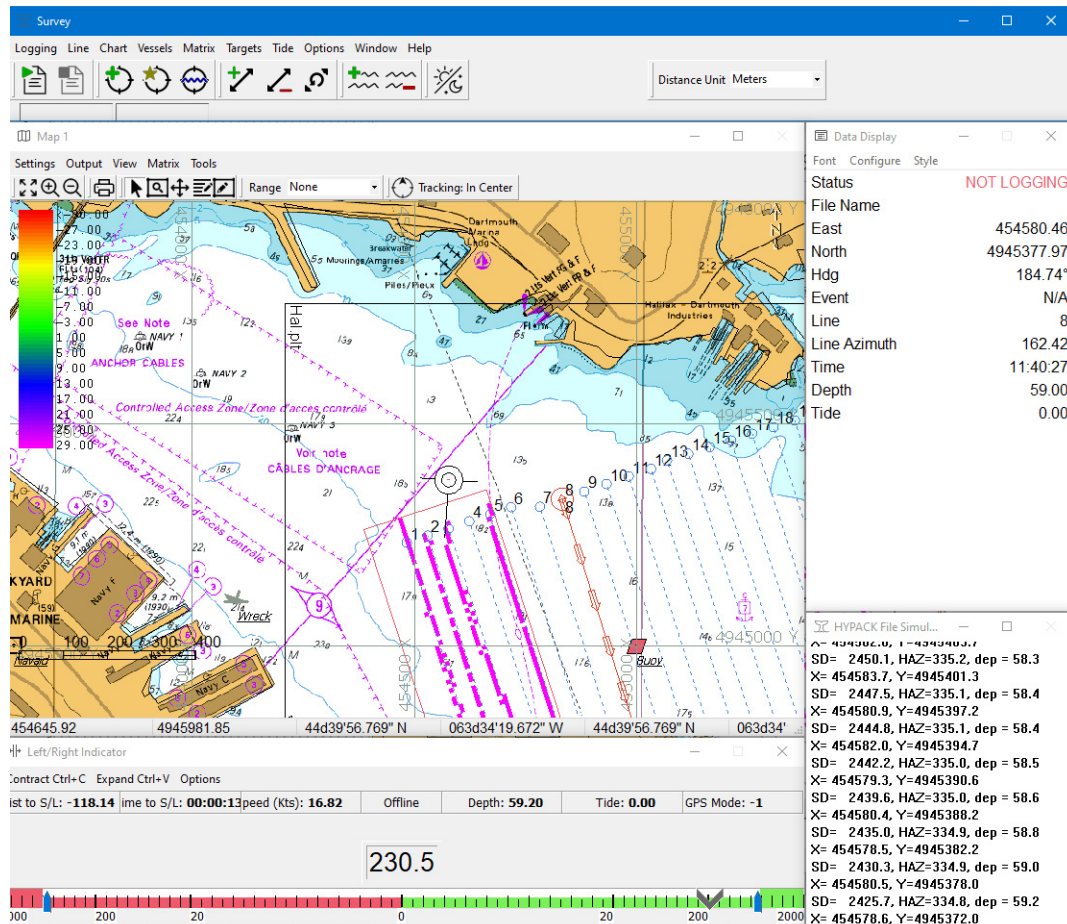
## SURVEY Update (Beta)

By Judy Bragg

Not only does HYPACK® 2021 support advancing technologies in hydrographic and topographic surveying, an updated SURVEY (Beta) program supports changing software programming technologies.

HYPACK® 2021 includes an updated beta version of our Survey program that has been rewritten in a more modern, more flexible and powerful coding language that will improve stability and usability, and support future development plans.

### Survey Update



There is very little interface change, aside from icons and a few dialog boxes. If you are familiar with the current SURVEY interface, you should have no trouble adapting to the new interface.

The SURVEY toolbar looks a little different:

*Toolbar*



**Icons from left to right:**

- Start/Stop Logging
- Mark Event
- Quick Mark Target
- Water's Edge Target
- Increment/Decrement Line
- Swap Line
- Increment/Decrement Tide
- Display scheme selection

Area Map display options are all in a single tabbed dialog:

*Map Display Options*

