



HYPACK
a xylem brand

Sounding Better!

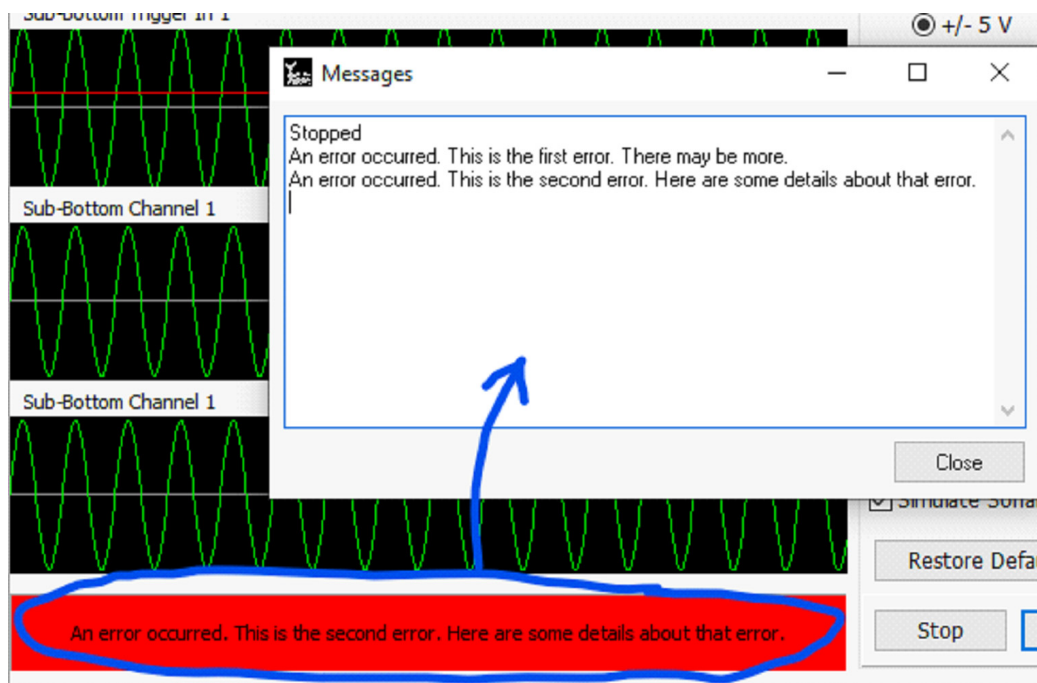
HYPACK Analog Sub-Bottom and Side Scan Updates

By Daniel Tobin

HYPACK users with analog side scan or sub-bottom devices will see several improvements to the Analog Monitor in HYPACK 2022.

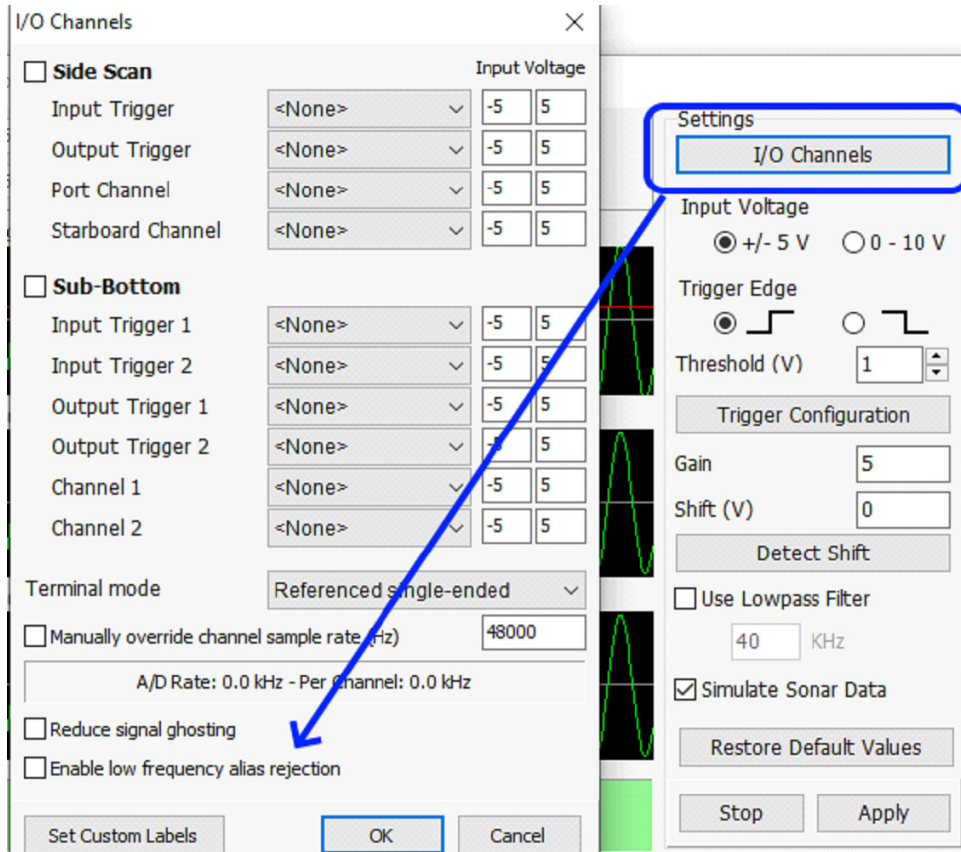
Firstly, critical errors will now display a more detailed error message if you click on the error panel at the bottom of the program:

FIGURE 1. Open and View Error Messages from the Bottom of the Program



Enhanced alias rejection is a new feature added this year. This is used when sampling at low frequencies. More details can be found here: <https://zone.ni.com/reference/en-XX/help/370466AH-01/mxdevconsid/enhancedaliasrej/>. The feature can be found in the "I/O Channels" window:

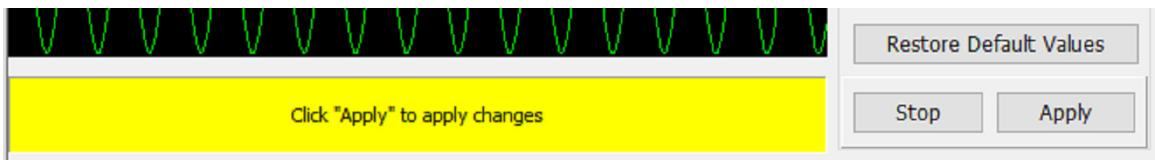
FIGURE 2. Enhanced Alias Rejection for Low Frequencies



Additionally, you'll notice you can also click "Cancel" in the "I/O Channels" window. Previously, any changes made in this window had to be applied. Now, if you make a change in error, you can cancel that change. How convenient!

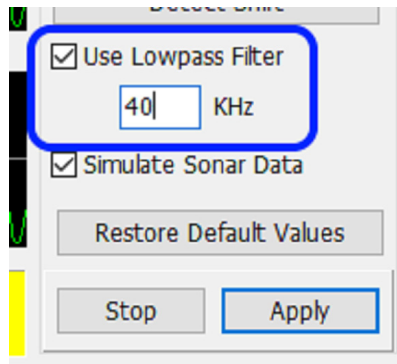
If you do make a change, the panel at the bottom will alert you to click "Apply":

FIGURE 3. Apply Changes Alert



You can also change the cutoff value of the low pass filter:

FIGURE 4. *Low Pass Filter and Cutoff Value*



Finally, some features of the Analog Monitor are not available on all National Instruments converters. Previously, if a converter did not support low pass filtering, the program would stop there and fail to run. Now, if a converter doesn't support a non-critical feature (like low pass filtering or alias rejection), the Analog Monitor will report the error but allow the program to continue running.