



# New HYPACK Combined Hardware GUI

By Andrew Clos

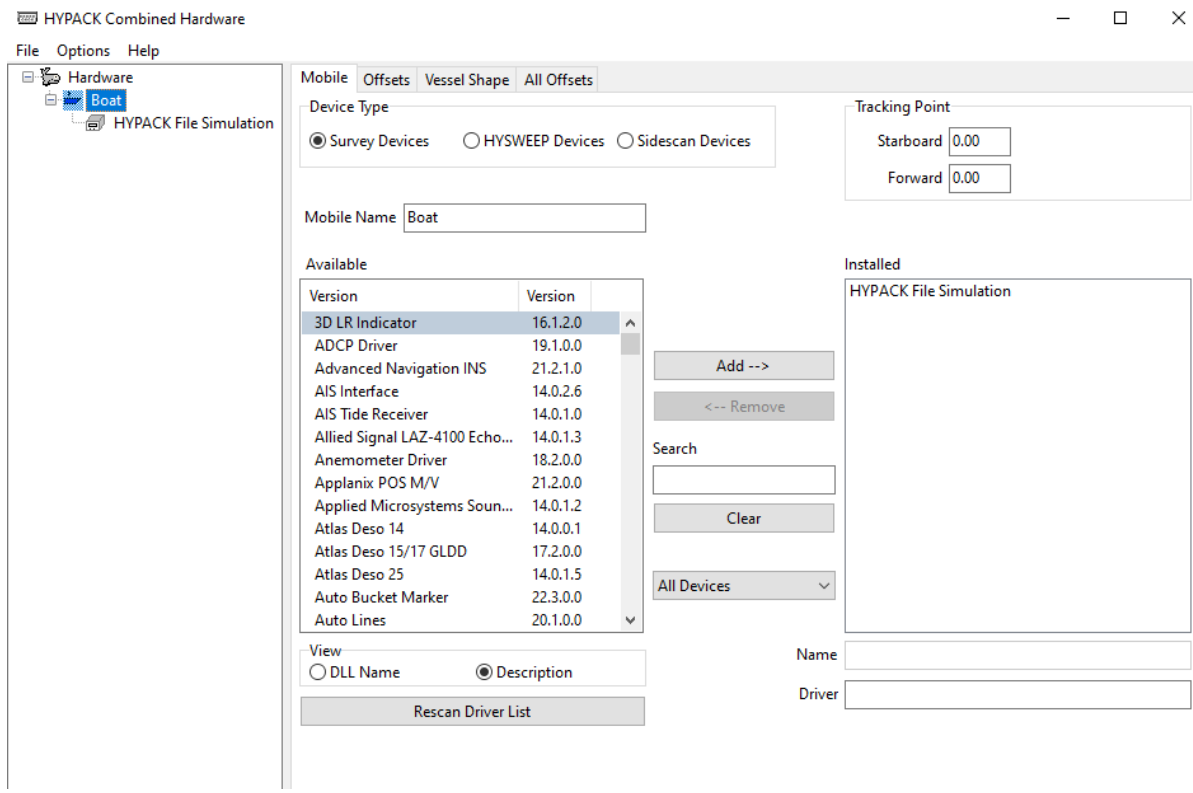
## INTRODUCING THE NEW HYPACK COMBINED HARDWARE

Hello Fellow HYPACK Users,

In my previous Sounding Better article [Updates to Hardware](#), I talked about some small changes that were made to the HYPACK Combined Hardware program and mentioned that a larger redesign was in the works. The first version of this redesign is ready for the 2023 release, and this article explains the changes that have been made.

Nearly all of the settings and selections you are familiar with are still present, but a few items were moved and combined with similar settings in parts of the program you're already familiar with. We've added a couple of new features, such as the ability to search for a driver by name, and the options to enable, disable, or remove an installed device from the tree view on the left side of the Hardware window. Figure 1 shows what the new Hardware GUI looks like when you first open it with a fresh project.

*Figure 1. New Hardware GUI Upon Initial Opening*



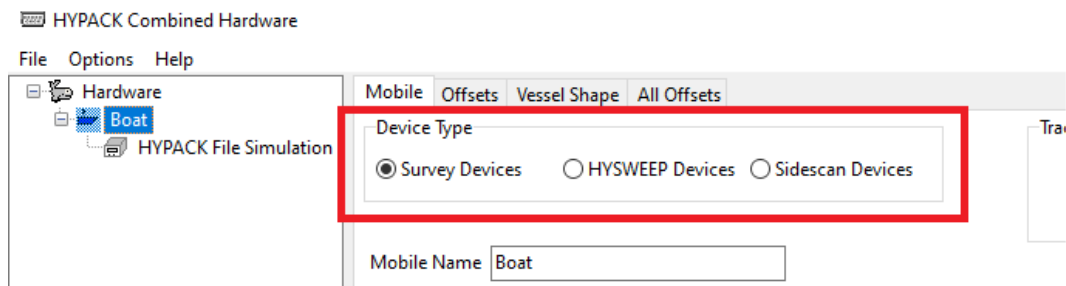
## THE CHANGES

Figure 1 shows that **HYPACK Combined Hardware now initializes with the first mobile (“Boat” in this example) selected with its corresponding Mobile tab displayed.** Previously, Hardware loaded with the Hardware device selected and System tab displayed by default. This change was made because most of the options on the System tab have been moved to the Mobile, HYSWEEP, and Side Scan Devices tabs. On the Mobile tab, you’ll find the same lists of available and installed hardware devices, the [Add-->] and [<--Remove] buttons, and driver scanning, functions, and options.

Figure 2 shows a key difference in the Mobile tab: **A new group of radio buttons at the top of the tab allows you to switch between Survey, HYSWEEP, and side scan devices.** Here are some key takeaways from this portion of the Hardware program:

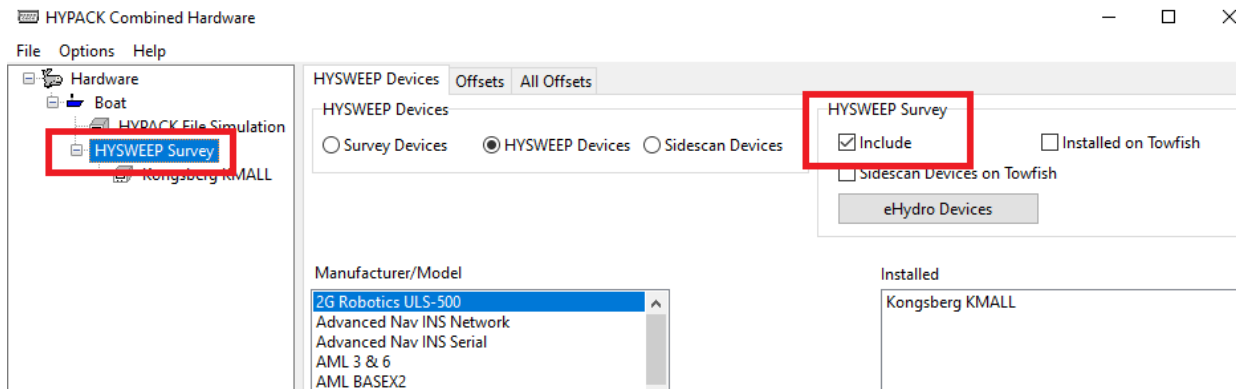
- If you do not have the HYSWEEP or side scan option enabled, selecting the corresponding radio button it will enable it.
- Please note that you can only have either the HYSWEEP or side scan option enabled, but not both. Enabling one will disable the other.
- If you enabled the HYSWEEP or side scan options but have not installed any devices for them, these options will turn off when you move to another tab or select a different device in the left tree view.

*Figure 2. New Radio Buttons to Move Between Survey, HYSWEEP®, and Side Scan Devices*



To disable the HYSWEEP or side scan options, either remove all devices from them, or uncheck the Include check box in the HYSWEEP Devices or Side Scan Devices tab, which is shown in Figure 3. These Include checkboxes were previously located in the System tab, but they have been moved and function the same as they always have.

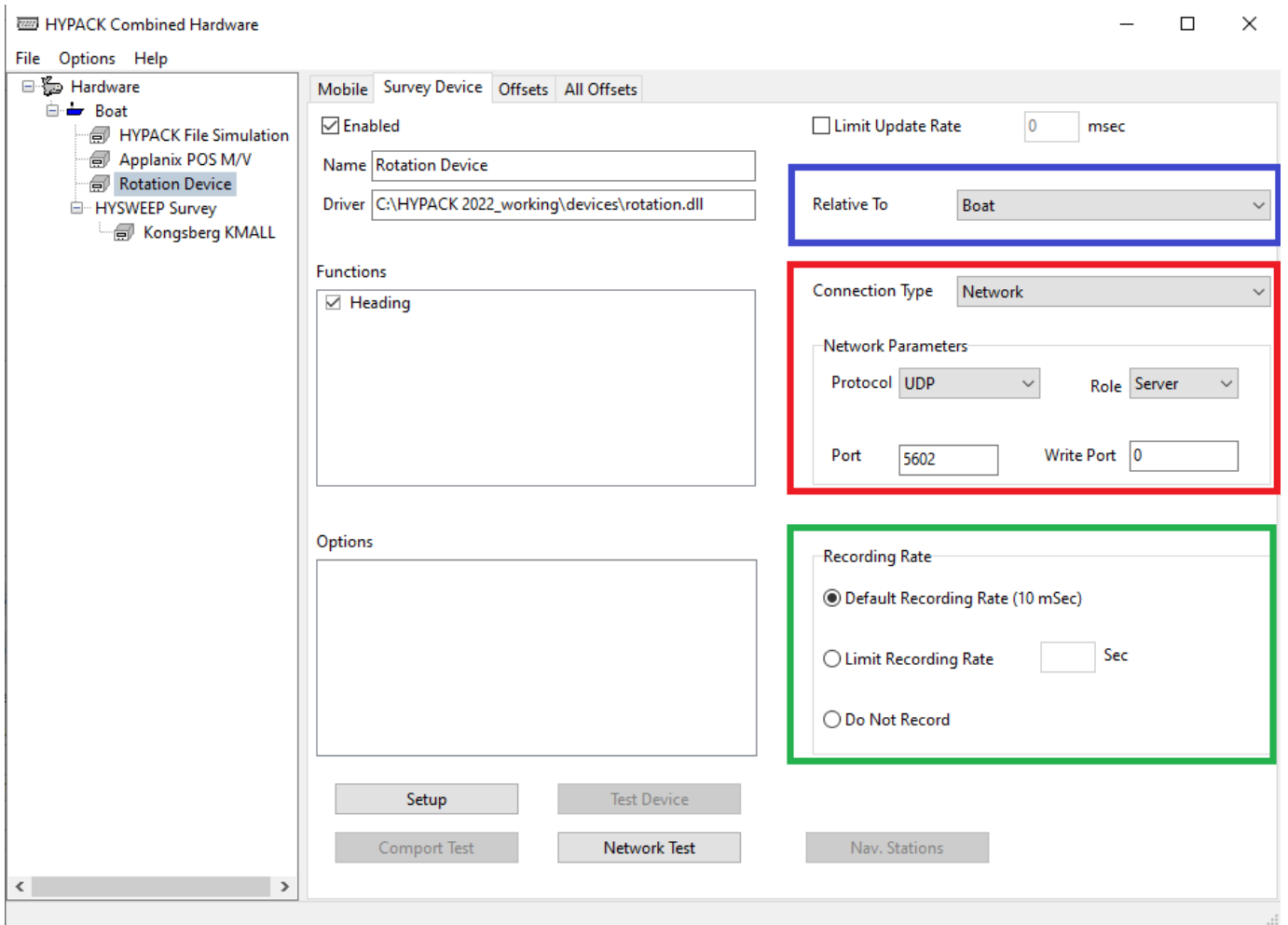
*Figure 3. New Location of the HYSWEEP Survey “Include” Checkbox*



A few items related to configuring devices, such as the Relative To drop down, connection configuration options, and Recording Rate, were in their own separate dialogs or on other tabs.

Figure 4 shows that these items are now consolidated in the Survey Device tab.

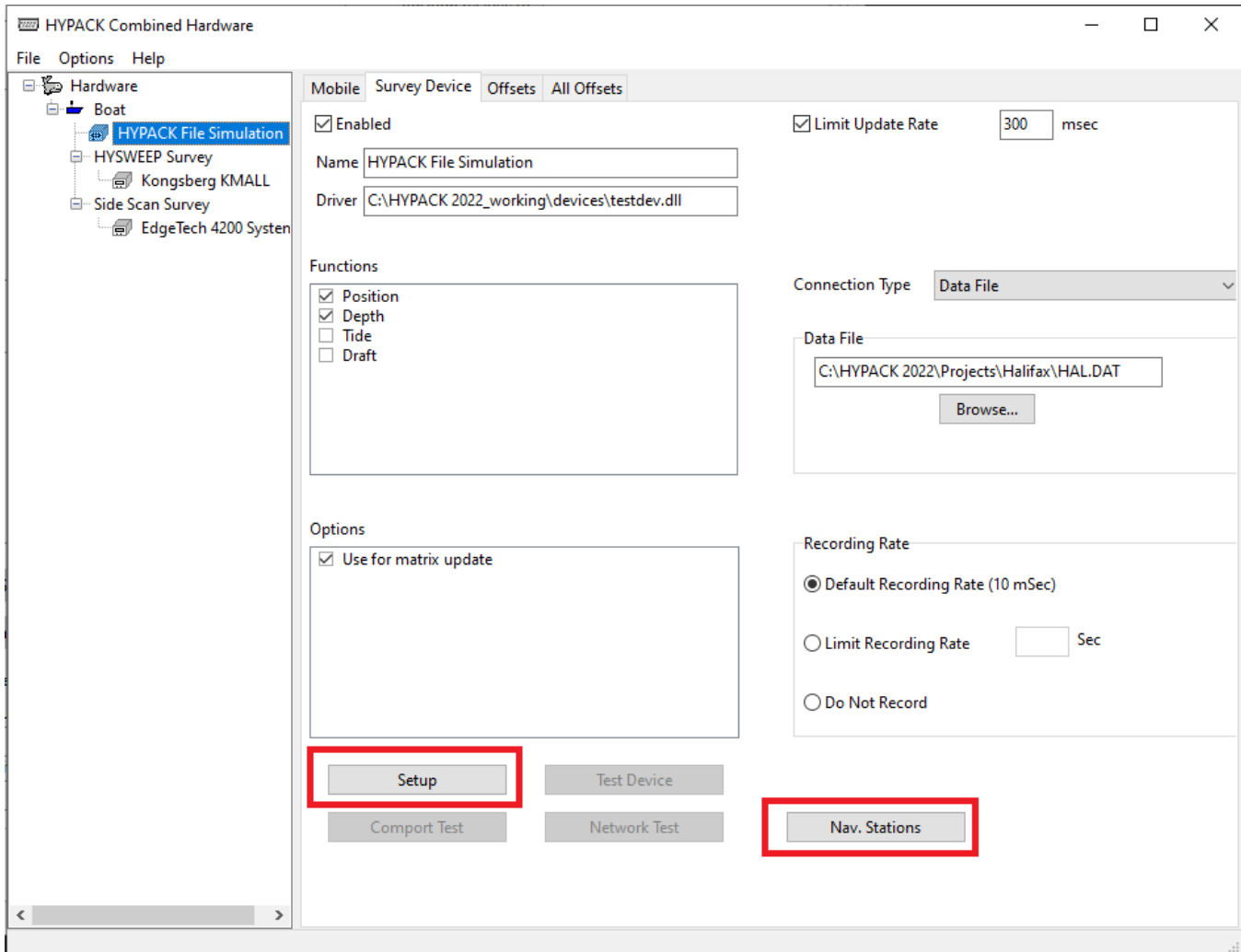
Figure 4. New Locations of the Relative To Drop Down, Connection Type Configuration Options, and Recording Rate are Shown on the Survey Devices Tab



You may have noticed that the [Setup] and [Nav. Stations] buttons are no longer on the Mobile tab. They are also located on the Survey Device tab where parameters used to configure each specific device are located. The Setup dialog can also still be accessed from the Mobile tab's Installed list by double clicking the device name.

Figure 5 highlights the new locations of the [Setup] and [Nav. Stations] buttons.

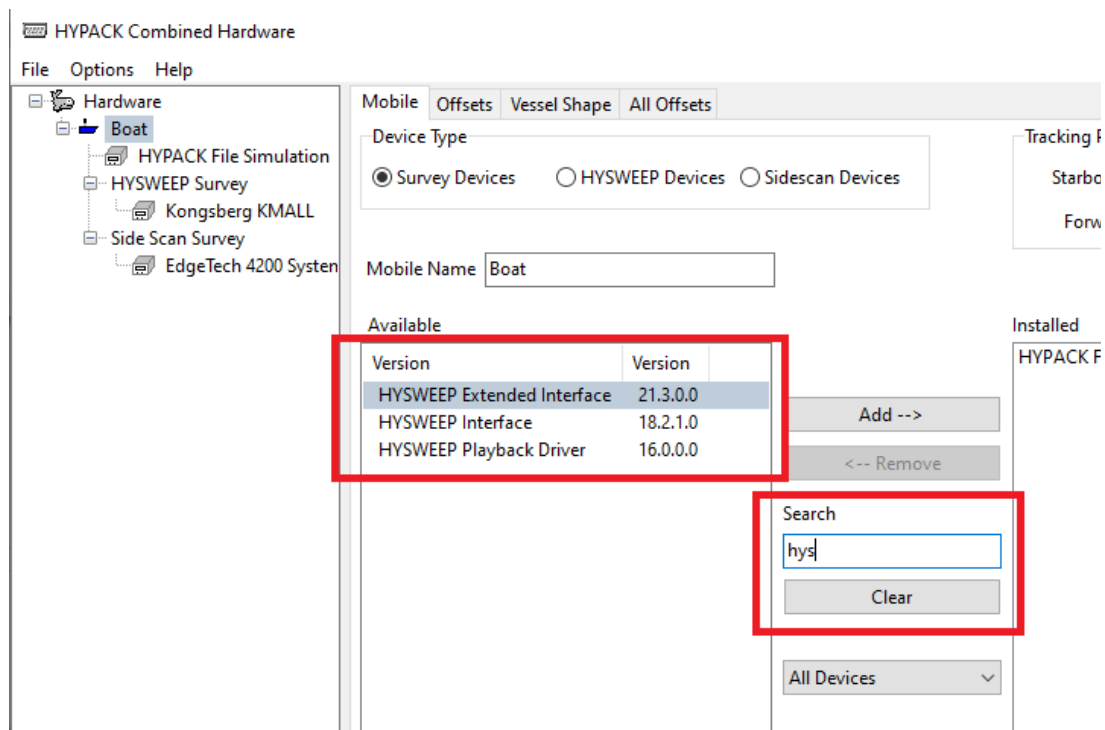
Figure 5. New Locations of the Setup and Nav Stations Buttons



## SEARCHING FOR DEVICES

A couple of new features have been added that I think many of you will find handy. The first is the ability to search through the list of drivers. A search dialog has been added to the Mobile tab, and is located between the Available and Installed hardware lists. Entering text into this box will filter the list of available devices for descriptions that include the entered text. To clear the filtering and view the entire list, you can either delete the entered text from the search box, or press the [Clear] button that is located below it. Note that search only checks the device description names, not the name of the \*.dll file. See Figure 5 below for an example of this process.

Figure 6. The Search Box is Shown with Some Text Entered



## ADDITIONAL RIGHT-CLICKING FUNCTIONS

We have added some functionality when you right click a device in the left tree view of the Hardware program. **You now have the ability to enable or disable a device by right clicking on it.** Right-clicking to enable or disable a device behaves the same as checking or unchecking the 'Enabled' box on the upper left of the Survey Device tab.

**Additionally, you have the option to remove an installed device via right clicking.** This behaves the same as clicking the [<--Remove] button in the Mobile window to remove a selected installed survey device.

Figures 7 and 8 show these new options in the right click menu.

Figure 7. Options to Remove or Disable an Installed Hardware Device via a Right-click Pop Up Menu

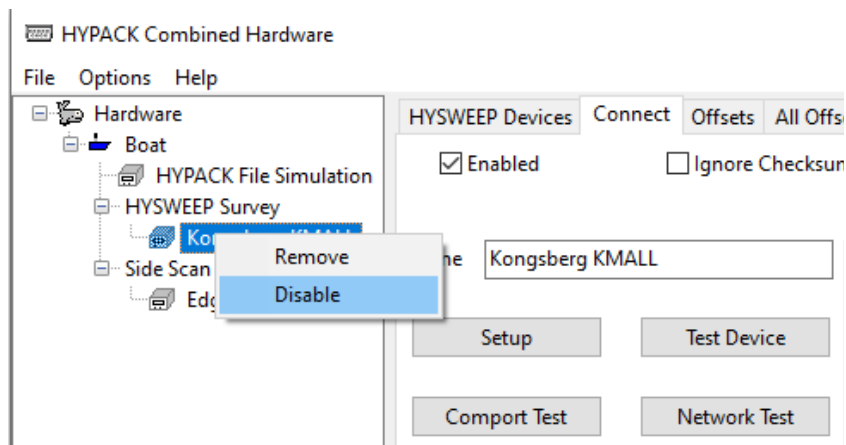
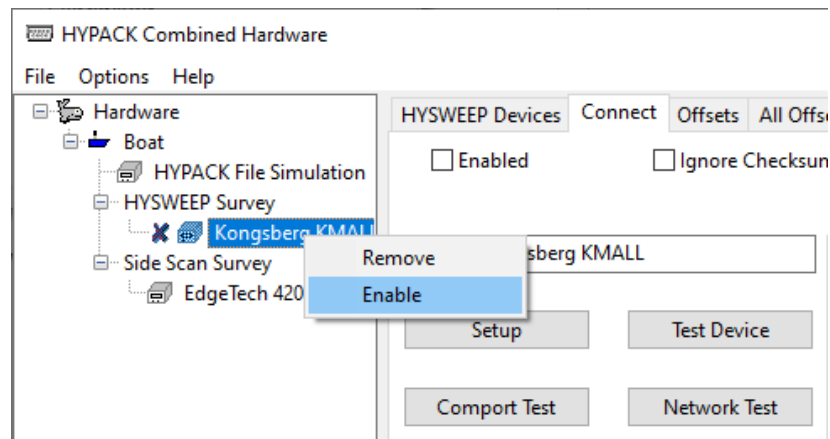


Figure 8. Options to Remove or Enable an Installed Hardware Device via a Right-click Pop Up Menu



I look forward to hearing from you about what you think of the new hardware design, and I hope that you find the changes will make the process of configuring your hardware a little more streamlined.

Happy Surveying!

Andrew Clos