



Moving and Restoring Off Screen Windows

By Cristhian Bermudez

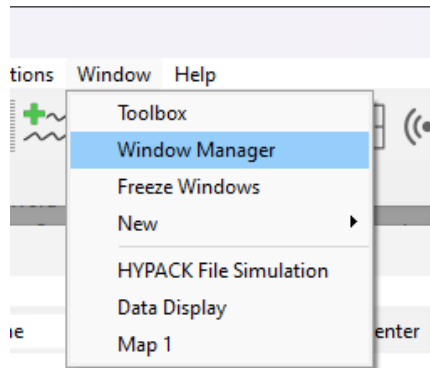
We receive questions almost every day related to windows that are no longer visible on the screen. This is normally caused when you are using several monitors during data processing or collection, thus when you don't have the additional monitors connected, you cannot see some windows.

There are several ways to solve this, however I am going to explain the easiest ones.

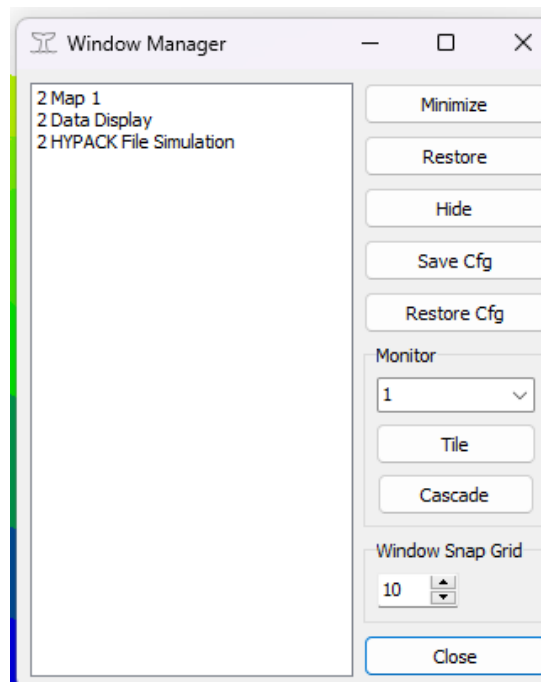
HYPACK® SURVEY WINDOWS

There are several windows that open when you start HYPACK® SURVEY. When one of those windows disappears, you can restore it using the Windows Manager that is located under the Window menu in HYPACK® SURVEY:

HYPACK® SURVEY Window Manager Menu



Under the Windows Manager you will see all of the HYPACK® SURVEY windows currently active. There is a number on the left of each window name that indicates the monitor identifier. If you don't see one of the windows, you can use the buttons for Minimize, Restore, Tile to change how that window is displayed.



SEPARATE HYPACK® OR HYSWEEP® SURVEY WINDOWS

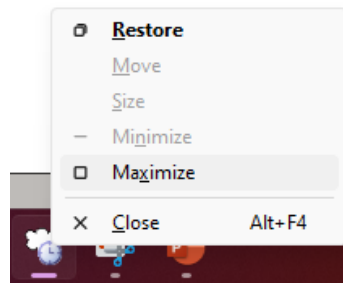
There are some windows that open separately from HYPACK® or HYSWEEP® SURVEY, like Real Time Cloud. These programs will have an icon that is displayed on the task bar in addition to the HYPACK®, HYSWEEP®, and Survey icons.

Separate Windows Opened Alongside HYPACK® SURVEY

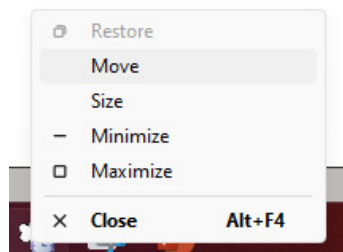


If the main HYPACK® or HYSWEEP® SURVEY or one of these separate windows are not visible on the screen, follow these steps to drag the window back:

1. Make sure the Window is not maximized or minimized. To do so, you have to press and hold the Shift key then right click on top of the icon in the task bar for this menu to appear. If the option Move is not grayed-out, it means the window is maximized or minimized. If the window is maximized you will see the Restore option, and you can continue with Step 2.



2. Open the menu again and select the option Move. When you do this the mouse will jump to the title of the window you want to drag.



3. You have two options here:
 - > Because the mouse is now located on the title of the window, you can left click and hold then move the mouse until you see the window.
 - > You can use the arrow keys to move the screen until it appears.

ONE MORE METHOD

In some cases, if what I described before doesn't work, try the following without skipping any steps:

1. Select the window on the taskbar.
2. Press ALT + Spacebar, use the down arrow to select Move, then press ENTER.
3. Use the arrow keys to move the window or click, hold and drag the window.