



Obtaining the Distance Between Two Mobiles in SURVEY

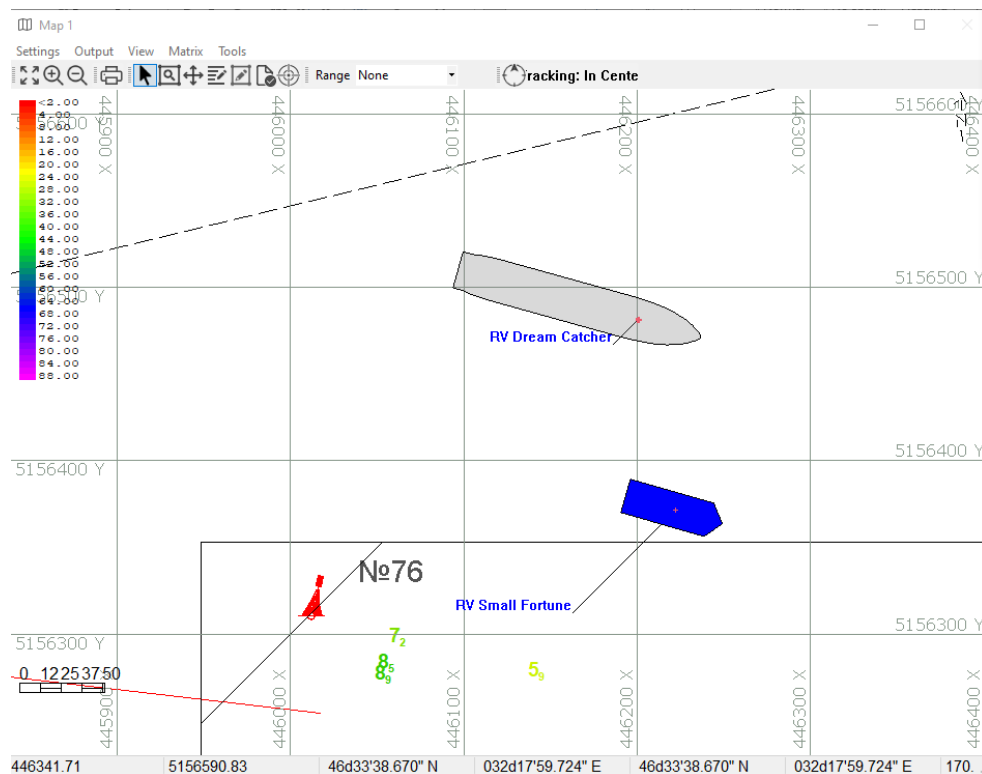
By Ivan Izaak

Here's the task: We have two vessels (mobiles in HYPACK), each with an onboard positioning device. We need to know the distance between them at any given moment.

Let's see how we can accomplish this task.

1. In the HARDWARE program you normally set the Tracking Point for each mobile - by default it is your BRP. Normally, you change the tracking point to the location of the most important device on board, which is the sonar in most cases. Remember, we want to see the distances between BRP of our mobiles, not between their sonars. But we will tend to this later.

Fig. 1 Two Vessels in SURVEY Map Window



2. Launch the SURVEY program and click Window -> New -> Tracking Points. The Tracking Points window appears. Click [Configure] to bring up the Configure window.

Fig. 2 Tracking Points Window

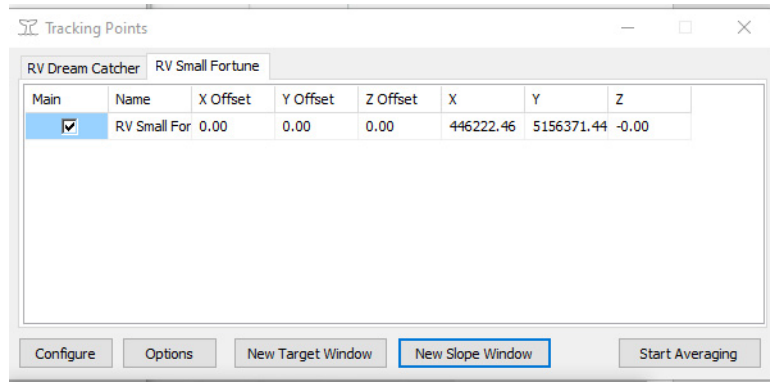
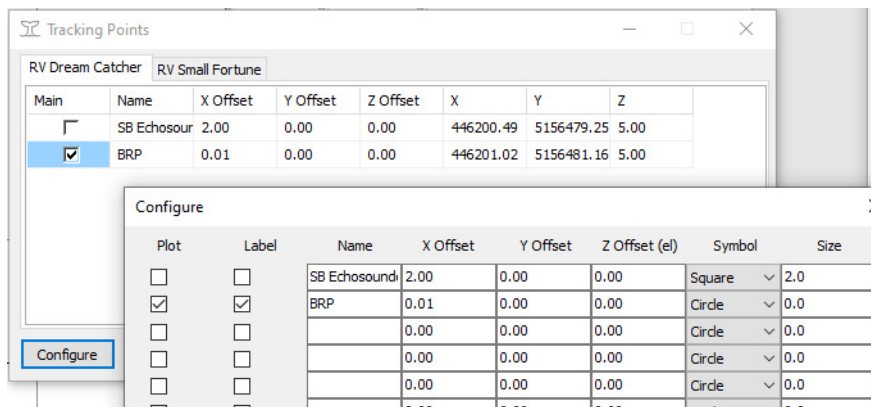


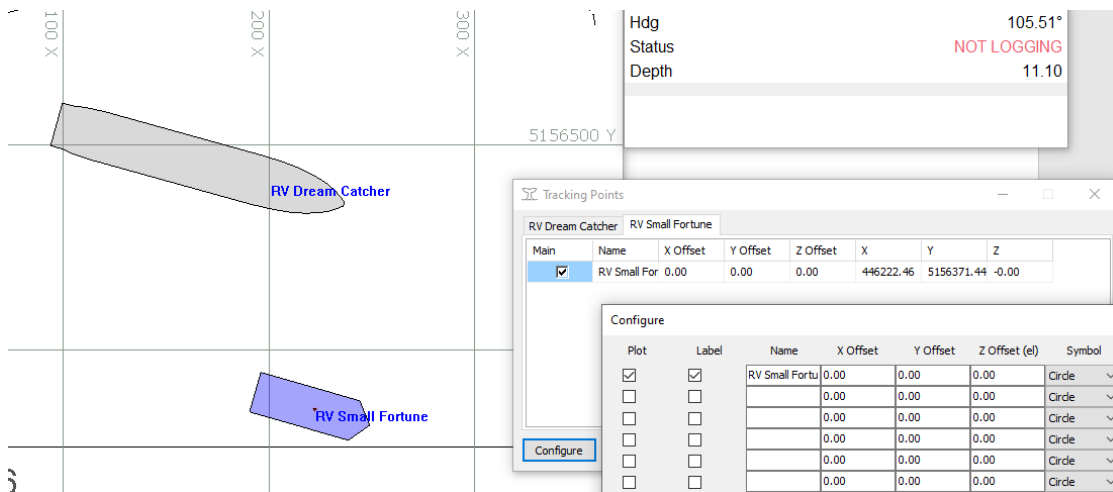
Fig. 3 Tracking Points - Configure



Note there are two tracking points for the main boat (RV Dream Catcher). You can set several tracking points as you wish! Set their display, name, offsets from BRP, etc from the Configure window.

3. Do the same for the second mobile, which is RV Small Fortune in this example.

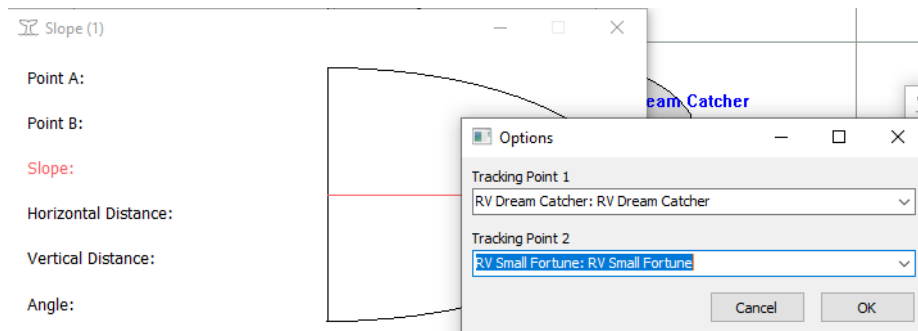
Fig. 4 Setting up Tracking Point for the Second Vessel



In Figure 4, note how the tracking point names are set to display at the BRP location for both vessels - now I can see their names if I need to. Of course, you can display vessel labels in the Boat menu!

4. Click [New Slope Window] back in the Tracking Points window. The Slope window appears. Right click anywhere within the Slope window and click Options. The Options window appears, where you can set the tracking points you want to calculate the distance between.

Fig. 5 Options for the Slope/Distance Calculation



Now you have the distance between both vessels!

Fig. 6 Tracking the Distance Between the Two Vessels

