



HYPACK
a xylem brand

Sounding Better!

ECHOTRAC E20 High-Quality Echogram

By Daniel Tobin

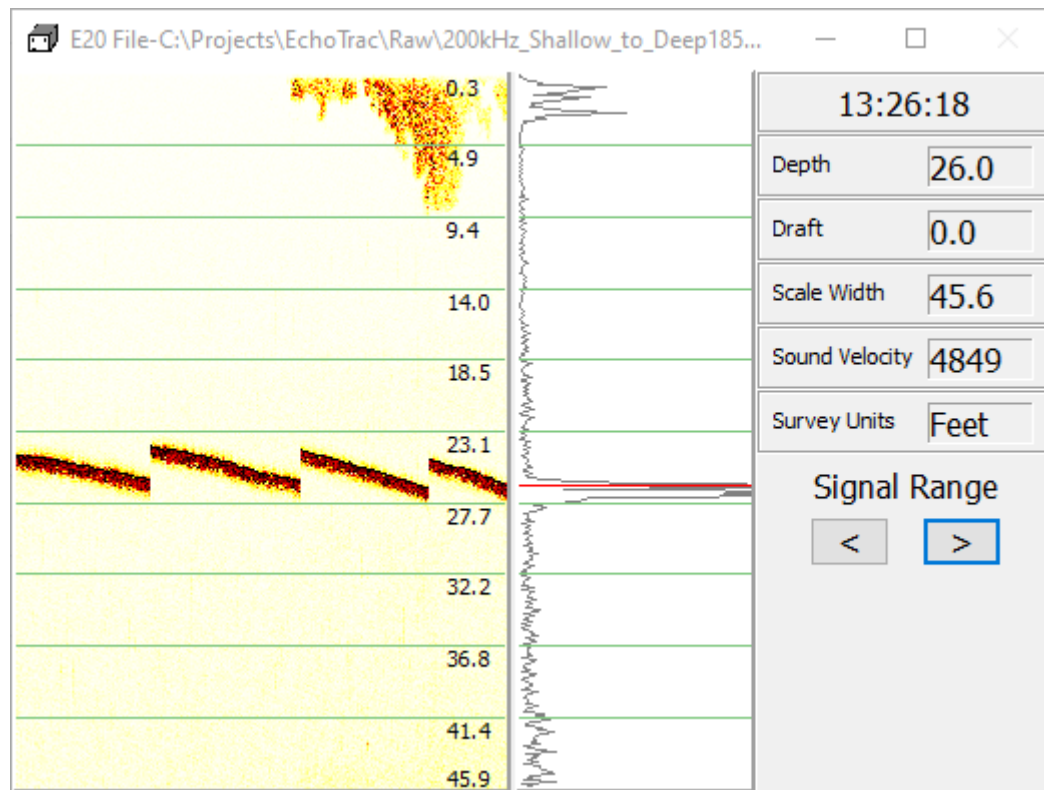
With the HYPACK® 2021 Quarter 2 update, you can now record and process higher-quality echogram data from the Teledyne Odom ECHOTRAC E20.

In earlier versions of the E20 driver for HYPACK®, the echogram data needed to be converted to work with our processing tools. You would have needed to choose a “downsampling” method for this conversion.

Now, with the 2021 Quarter 2 update, that’s no longer necessary. Any data you record using the E20 will be at full-quality with no need for conversion. Both the 32-bit and 64-bit Single Beam Editors have also been updated to process this new, full-quality echogram data.

In SURVEY, the E20 display has been updated slightly. You can now use the Signal Range buttons to adjust the display brightness. *This does not affect the recorded data* – you will always record the full resolution echogram data, regardless of your Signal Range setting.

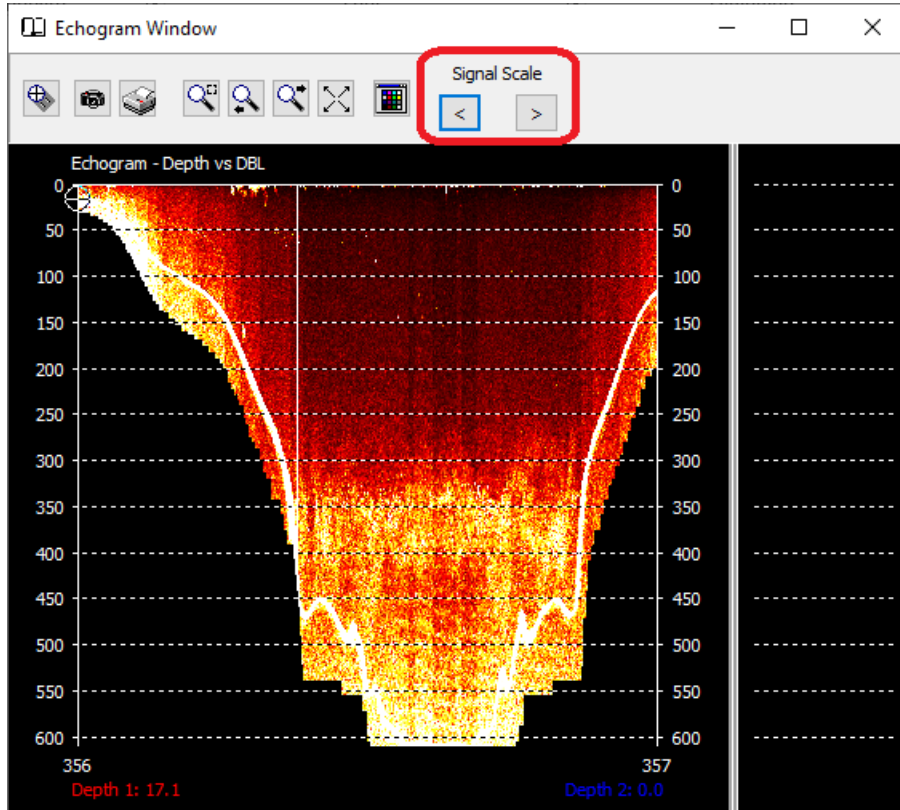
[Sample E20 Echogram Display](#)



NOTE: It’s likely that, with this increased echogram signal range, you’ll need to use the “Signal Range” buttons to lower the range until you see your imagery.

The 32- and 64-bit Single Beam Editors have a similar option in their respective Echogram windows:

32-bit Editor



64-bit Editor

