

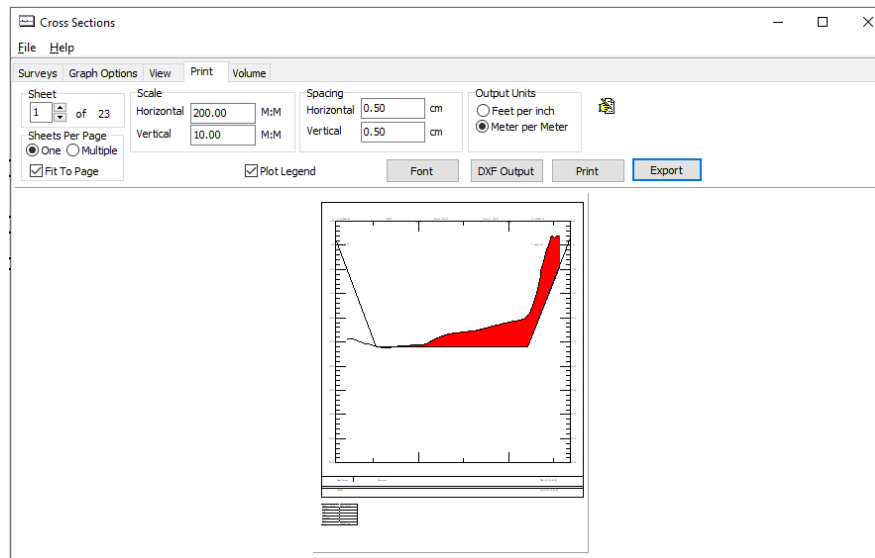


## Exporting Profile Images from CROSS SECTIONS AND VOLUMES

By Rizwan Shariff

Cross sections can now be exported as images in JPEG, BITMAP and PNG formats. The Export dialog can be launched with the Export button in the Print tab.

### *Print View of a Channel Profile in CROSS SECTIONS AND VOLUMES*



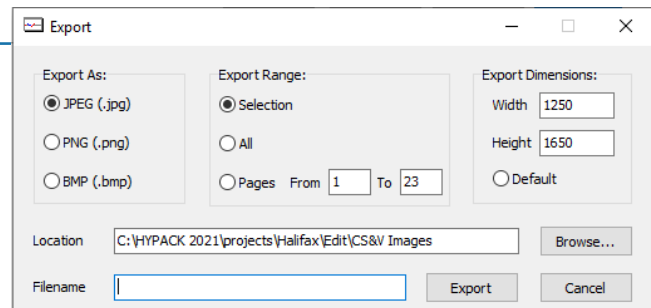
## EXPORT DIALOG

The Export dialog allows you to choose the export format, export range and image dimensions for the cross section export.

### *Export Dialog*

By default, the **Export As** format is JPEG; the **Range** is set to “Selection”, which refers to the currently viewed cross section; and the **Export Dimensions** are set to 1250px (Width) X 1650px (Height).

The **Default** option resets the width and height to the default values.

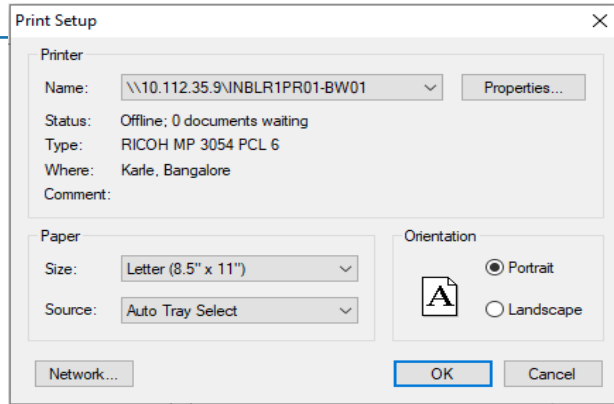


In the Print Tab, when the **Sheets Per Page** is set to Multiple, the dimension of the image is based on the paper size selected in the Print Setup (from the File menu) to maintain the best quality and prevent loss of data.

*Sample Print Setup*

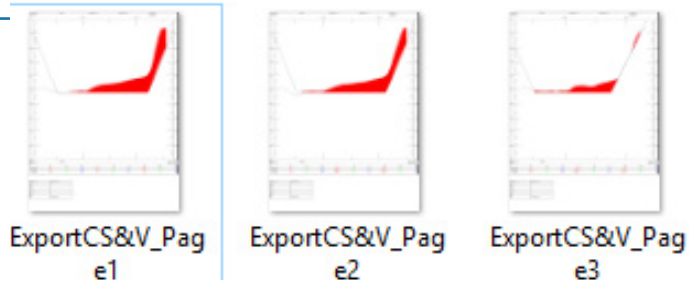
To select the location where the exported image is saved, click [Browse] and set a filename for the same.

In the Export dialog, when you click [Export], the cross sections are exported to the selected location with the given file name. If you select "All" or a selection of pages in the Export dialog, the exported images have the chosen filename with their respective page numbers appended.



*Sample Export of Multiple Profile Images*

The exported images, by default, are saved in the project \Edit\CS&V Images folder.



*Example of an Exported Cross-Section as a JPEG*

