



HYPACK
a xylem brand

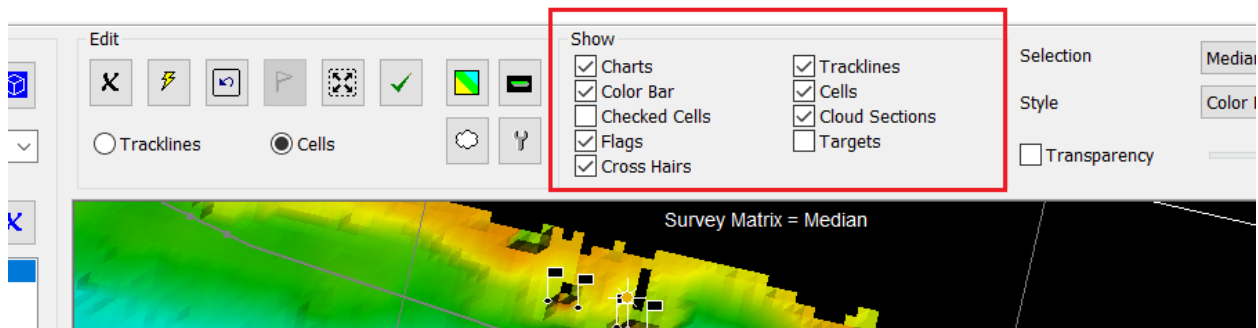
Sounding Better!

MBMAX64—Drawing Layers

By Mike Kalmbach

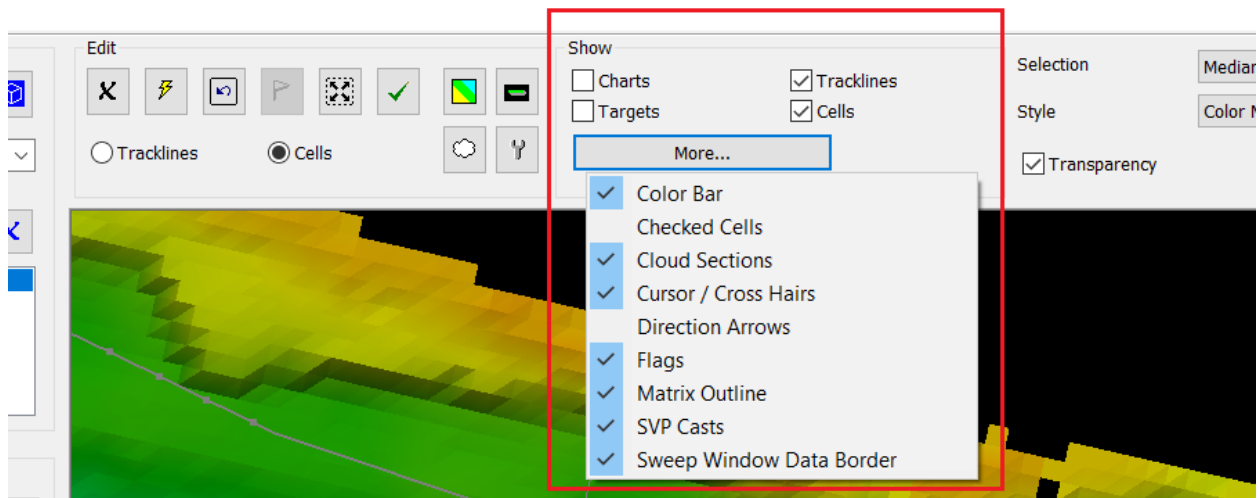
Here's a look at MBMAX64 (64-bit HYSWEEP® EDITOR) draw layers before the latest changes:

[MBMax64 in the 2021 Release](#)



Here's a look now.

[MBMax64 —July 2021 Update](#)



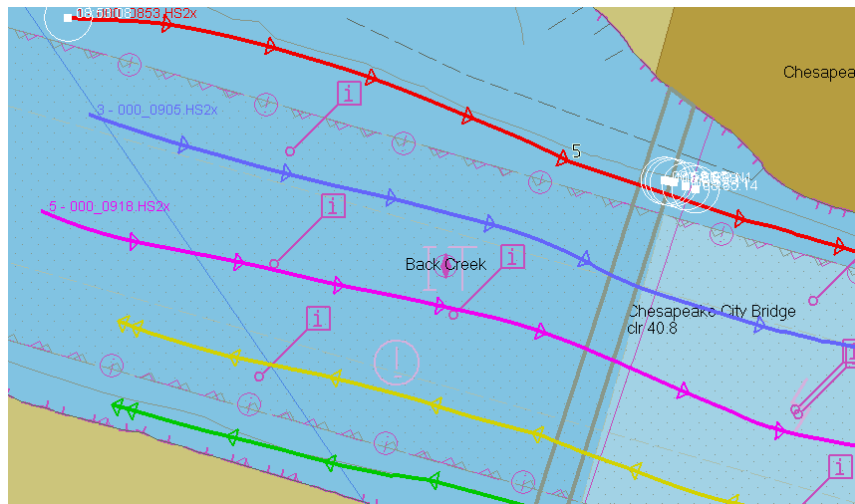
The change accomplishes a few things:

- The most common layers (Charts, Targets, etc.) are still available with a single click.
- The less common layers (Color Bar, Checked Cells, etc.) are available in a drop-down. This saves screen real estate and allows a larger Survey window.
- Some options that were merged into a single check box (to save screen space) are now separate.

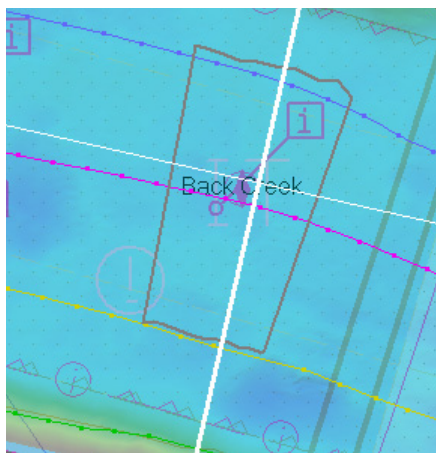
New and modified selections:

- **Cursor / Cross Hairs:** Previously labeled “Cross Hairs”, shows or hides the track line point cursor and matrix cross hairs (cell selection).
- **Direction Arrows:** Shows direction arrows on the track lines, and track lines slightly thicker. It’s good for analysis, but looks cluttered for day-to-day work.
- **Flags:** Shows / hides point flags and golden soundings.
- **Matrix Outline:** Shows / hides the matrix rectangle.
- **SVP Casts:** Shows / hides Sound Velocity Profile casts tagged with location.
- **Sweep Window Data Border:** Shows / hides a border of points edited in the Sweep Window. The border is sometimes useful, but sometimes just a mess (LiDAR for example).

Here are the optional direction arrows.



Here’s a useful data border. Multibeam Data.



Here’s a data border that might be hidden. LiDAR Data.

