



HYPACK
a xylem brand

Sounding Better!

MBMAX64 Reminder to Save Work

By Mike Kalmbach

People sometimes forget to save their edits—hours of work—then if something bad happens, they lose it all. The reminder should prevent that.

We've talked about auto-save but that's a lot of work and probably no better than the reminder.

SETUP

The reminder is easy to use. A new button in the Save Survey dialog gets you to the setup.

FIGURE 1. Click for Save Reminder Setup.

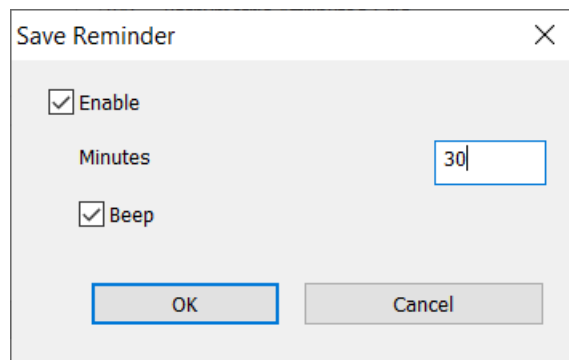
The screenshot shows the 'Save Survey' dialog box with the following settings:

- File Format:**
 - HS2x - HYSWEEP Edit 64 Bit
 - MTX - HYSWEEP Matrix
 - LAS
 - Append to File Names
 - HS2 - HYSWEEP Edit 32 Bit
 - Export
 - BAG - Bathymetric Attributed Grid
 - Input field: _TEST4
 - XYZ
 - GSF
- XYZ Options:**
 - Save All Points
 - Save One Point per Cell
 - Use Actual XY (Where Possible)
 - Use Cell Center XY
 - Save Zoom Area Only
 - One File Per Survey Line
- MTX Selection:** Median
- XYZ Selection:** XYZ
- Export Selection:** NHO - Test Format
- Minimum # Points for Median:** 1
- Strike Level:** 0.0
- Z Multiplier:** 1.000

Buttons at the bottom: Default Values, Save All Files..., Save Selected Files..., Close. A red box highlights the 'Save Reminder' button in the File Format section.

Figure 2 shows reminder setup. If Beep is selected, the reminder makes a tone once a minute after the timer expires.

FIGURE 2. Simple Setup.



THE REMINDING

Save Reminder is only active in Stage 2 (depth) editing. That's where most of the work gets done. Also, the timer doesn't start until edits are made.

Figures 3 and 4 contrast an edit window before (figure 3) and after (figure 4). That should get people's attention! After files are saved the edit windows revert to normal.

FIGURE 3. Depth Editing Before the Save Reminder.

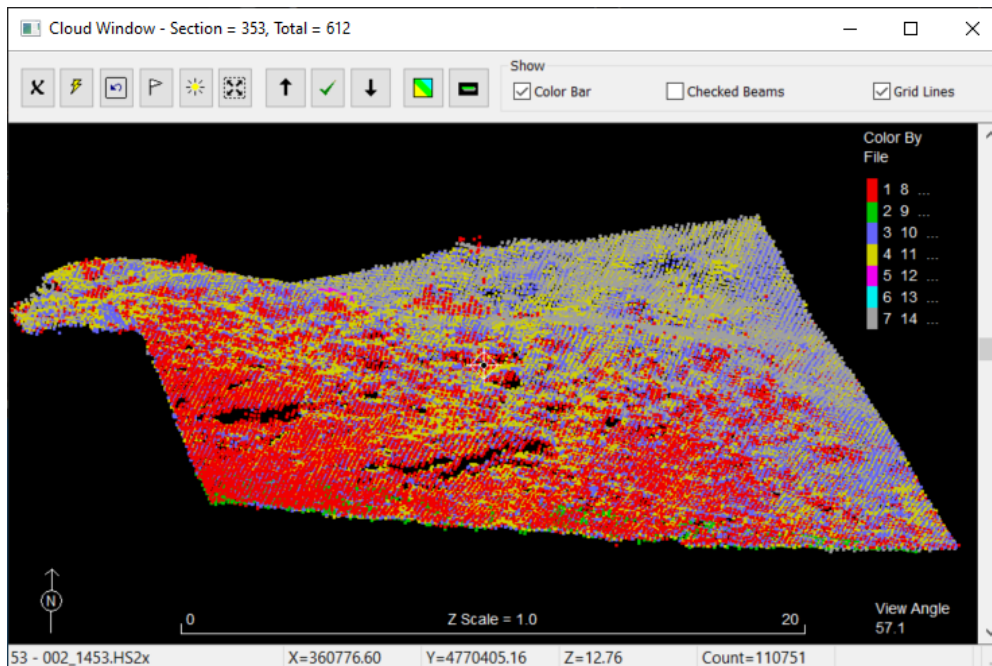


FIGURE 4. Depth Editing When it's Time to Save Work.

