



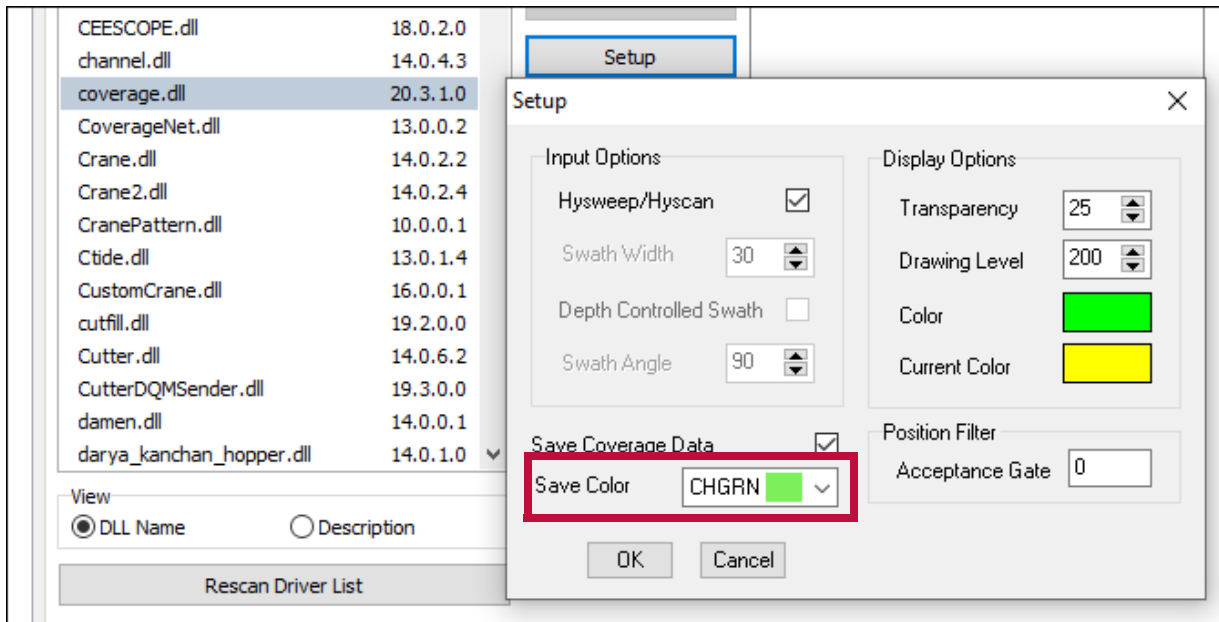
## Coverage Driver Update

By John Lindberg

The coverage.dll has recently been upgraded to save the coverage track in HYPACK's \*.DG2 format. The driver previously recorded the coverage track in the old \*.DIG format in the form of stick-figure type drawing. The flexibility of the \*.DG2 format allows an actual fill color that you can select in the Setup dialog. This comes in handy when you want to differentiate between coverage of different surveys or the coverage of different survey vessels.

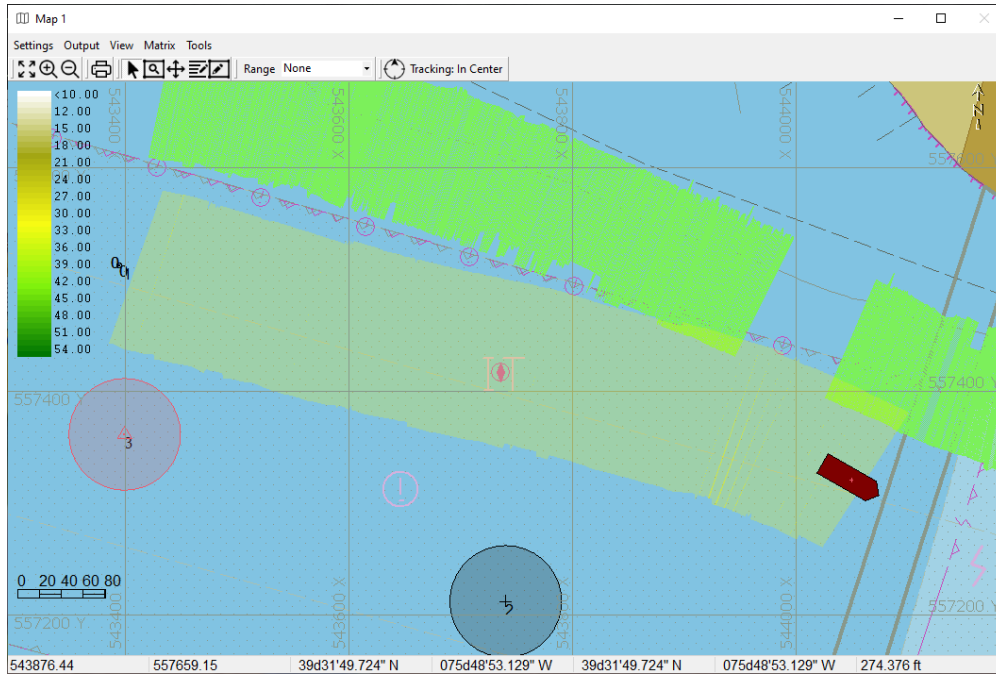
The image below shows the new "Save Color" option. This option actually creates color filled polygons that are saved as a \*.DG2 background file.

### *Save Color Option in the Coverage Driver Setup*



The Display Options colors are specific to the SURVEY program, allowing you to see the current coverage as a different color from the collected coverage.

## Coverage in SURVEY



Here is an example of the coverage data displayed in the HYPACK® Map window. The tracks with different color settings are now displayed accordingly.

## Coverage DG2 Files from Different Surveys in the HYPACK® Map Window

