



**HYPACK**  
a xylem brand

Sounding Better!

## New Beta Version of SURVEY – Code Name: RADSurvey

By John Lindberg

With the release of the Q3 updates, we have decided to release a 'beta' version of our SURVEY program, codenamed RADSurvey.

You may ask yourself “why rad?”

Is it 'cool'? Yep! Is it 'radical'? Hardly. “RAD” comes from the development platform we are currently using. You see, the SURVEY program we all know and love has not changed drastically for many years. While there have been many facelifts to SURVEY over the years, the underlying code has not changed much since its inception. The new platform gives us more flexibility for future changes to the code base, meaning enhanced stability, usability and it is easily extensible to meet future demands (Thanks, Will!).

As you can see in the comparisons below, there is very little interface change, aside from icons and a few dialog boxes. Users familiar with the original SURVEY interface should have no trouble adapting to the new interface.



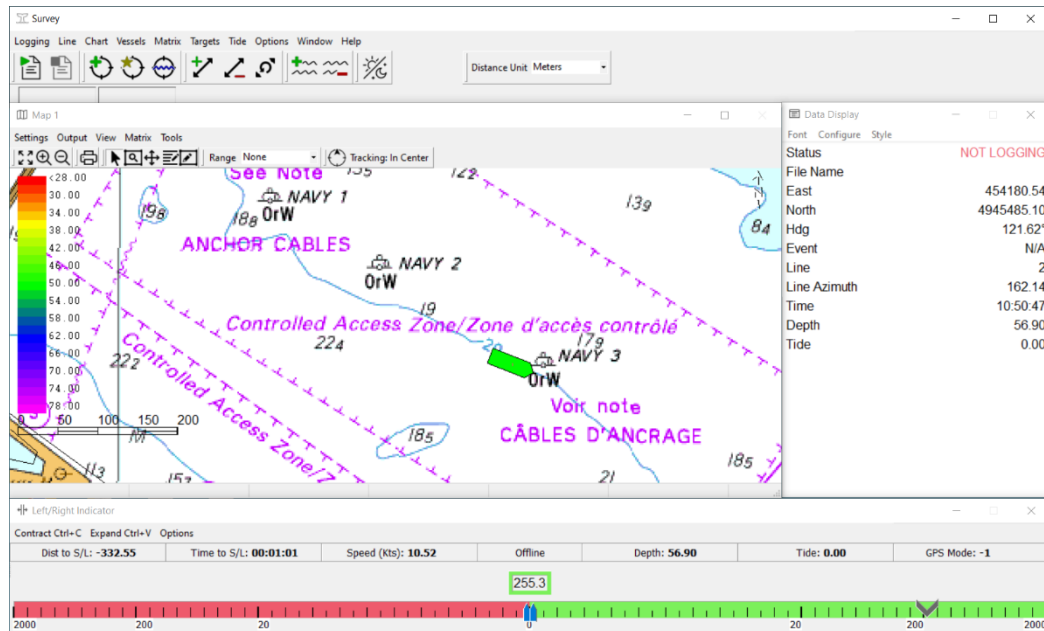
**rad** adjective

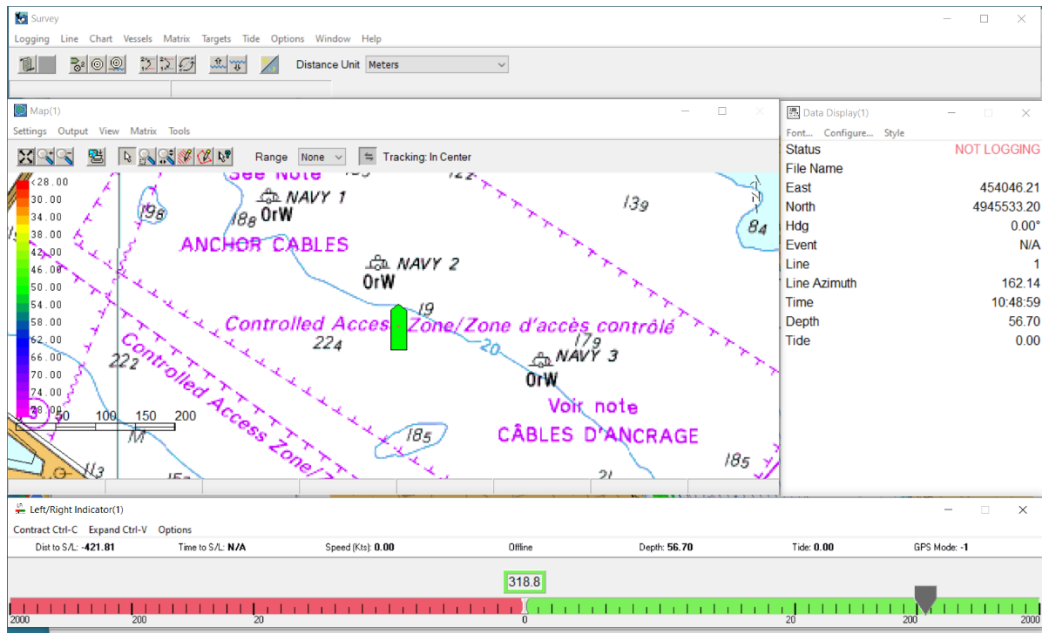
**Definition of rad**

*slang*

: COOL sense 7, RADICAL

### RADSurvey





## RUNNING RADSURVEY IN HYPACK 2020

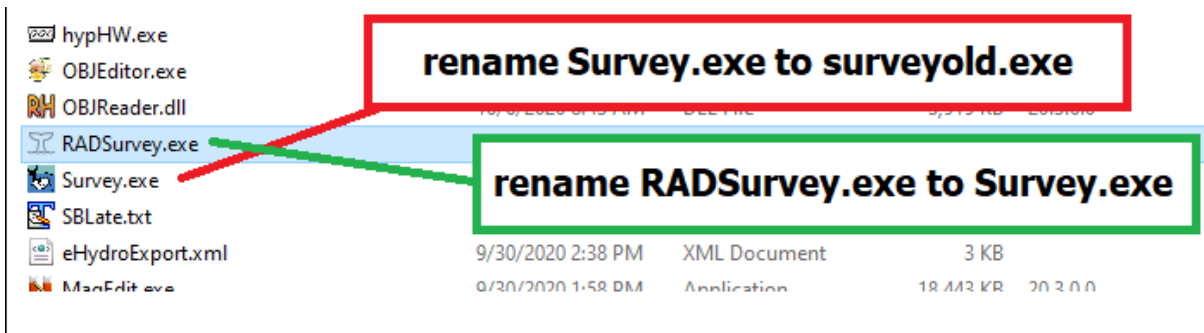
RADSurvey.exe is included with the Q3 updates, so it will reside in your HYPACK 2020 install folder after copying in the updates. You have two different ways you can run RADSurvey:

- Replace SURVEY with RADSurvey.
- Run RADSurvey from the HYPACK® Tools menu.

## REPLACE SURVEY WITH RADSURVEY

This is my preferred way, because I have faith in our developers. Or perhaps I like to live on the edge?!? Also, my time is not mission-critical. Anyways, just open Windows® Explorer and rename survey.exe to something like surveyold.exe. Then rename RADSurvey.exe to survey.exe. You are done! You can now use the standard SURVEY icons in HYPACK® to access SURVEY, DREDGEPACK®, HYPACK® SURVEY and HYSWEEP® SURVEY, etc. The smart SURVEY icon works, too!

*Replacing SURVEY with RADSurvey by Renaming the Executables*

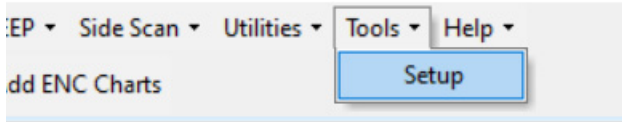


## RUN RADSURVEY FROM THE HYPACK TOOLS MENU

If you don't want to chance losing the original SURVEY program, you can set up RADSURVEY in the TOOLS menu like this:

1. **Go to the TOOLS menu in the HYPACK® 2020 Shell, and click SETUP.**

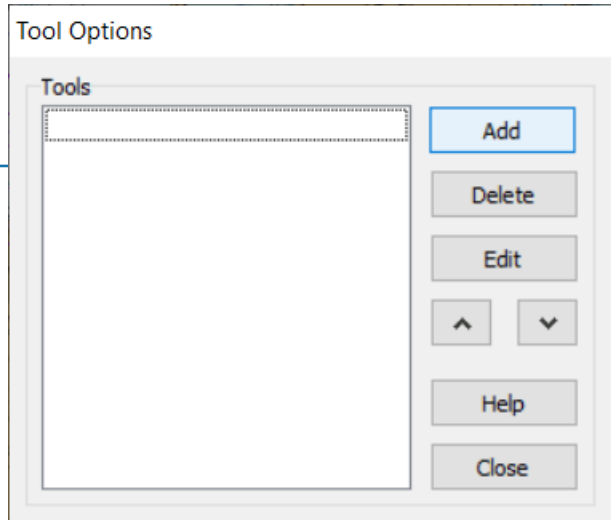
*Selecting TOOLS-SETUP*



2. **Click [Add].** The Tool Properties dialog then opens.

*Tool Options Dialog*

MGS-84      Zone: Zone 20(66W-60W)      Distance Un

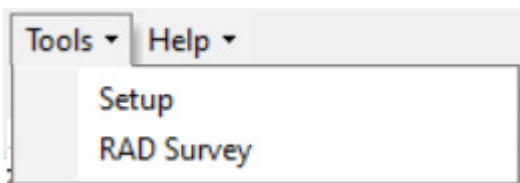
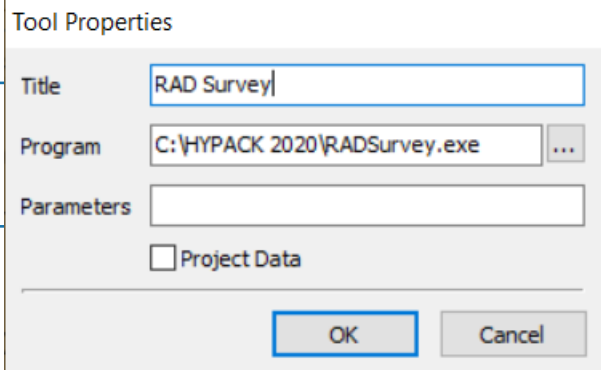


3. **Enter the information as shown here.**

*Adding RADSURVEY to the Tools Menu*

4. **Click [OK].** You then see a menu item for RADSURVEY under the Tools menu.

*RADSURVEY in the Tools Menu*



You can also create shortcuts for HYPACK® SURVEY and HYSWEEP® SURVEY, HYPACK® SURVEY and SIDE SCAN SURVEY, and DREDGEPACK® by entering the respective tool properties as shown in the following images. The important thing here is to enter the proper parameter for each shortcut.

Configuring the Tools Menu to Run HYSWEEP® SURVEY (top left), SIDE SCAN SURVEY with RADSurvey or RADSurvey in DREDGEPACK® Mode (bottom)

