

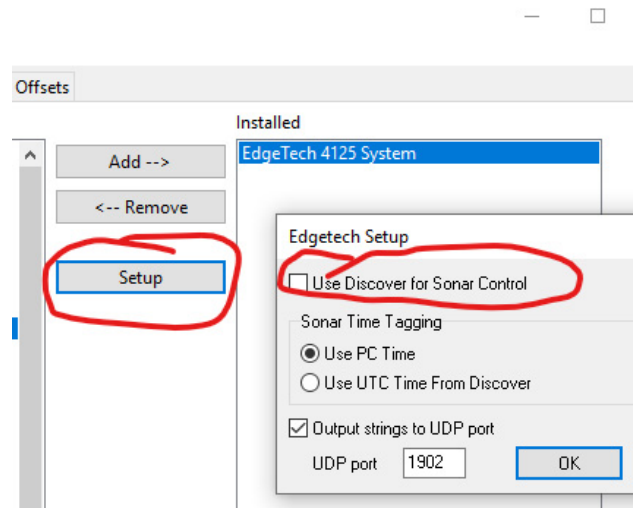


# EdgeTech Direct Sonar Control Through HYPACK

By Daniel Tobin

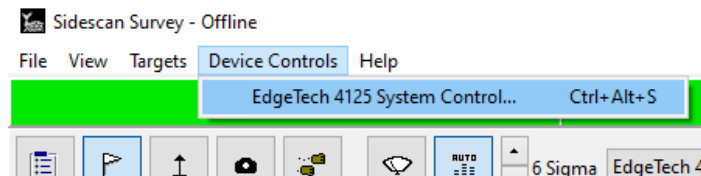
HYPACK® can directly control most EdgeTech sonars without the use of EdgeTech Discover survey software. This can be useful if Discover is not installed, is perhaps misconfigured and not communicating with the sonar correctly, or if a user simply does not want Discover running simultaneously with HYPACK®.

To directly connect to your EdgeTech sonar and use HYPACK® for control, in HYPACK Hardware, enter Setup for your device and make sure "Use Discover for Sonar Control" is unchecked:



Continue the rest of your setup like normal: Use the IP address of the sonar and the default port (1900).

In Side Scan Survey, select Device Controls -> EdgeTech System Control:



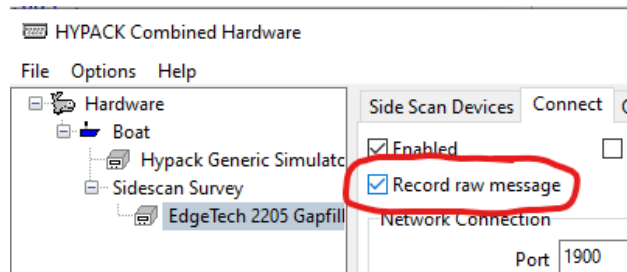
This will open a sonar control window, giving HYPACK direct control over the sonar without needing to run EdgeTech Discover.

---

It should be noted that if a user starts or stops logging a line in HYPACK<sup>®</sup>, logging will start or stop in Discover as well, allowing Discover to record its JSF data separately. This is useful if you need JSF data instead of HYPACK<sup>®</sup>'s HSX data, or want an extra set of redundant data.

As of the HYPACK<sup>®</sup> 2022 Q3 update, users can save EdgeTech sonar data in JSF format in addition to HSX format in HYPACK<sup>®</sup>. Note: This only applies to EdgeTech sonars.

To enable recording EdgeTech sonar in JSF format in HYPACK<sup>®</sup>, launch the HYPACK Hardware program, select your EdgeTech sonar, go to the "Connect" tab, and check "Record raw message":



Now, whenever a line is recorded in HYPACK<sup>®</sup>, a JSF file will be recorded in the project's RAW folder alongside the regular RAW and HSX files:

