

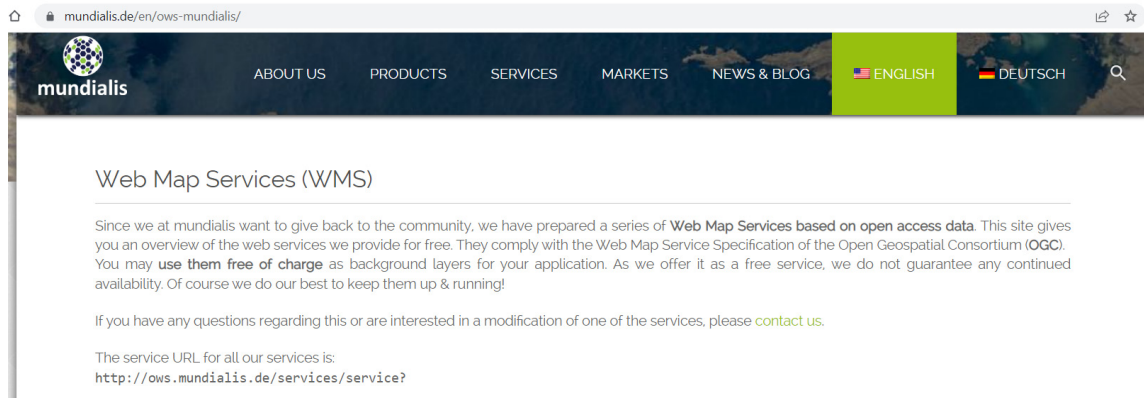


Using the MUNDIALIS Web Map Service

By Ivan Izaak

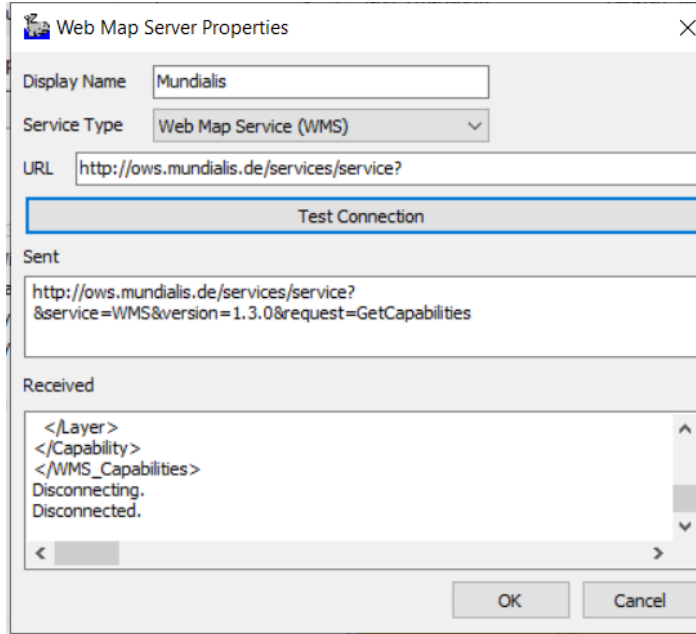
Many users look for free background charts for their projects. Of course, it is way better if you can get the appropriate S57 or other official ENC (especially if you do your survey for the national hydrographic service), but for many applications you do not need such a precise chart and only require a general look of the area in order to create planned lines, other survey planning, and data recording. Well, in the past I showed how to use the free Open Street Maps service, but that is no longer accessible. Let's check another one out!

1. Follow the link below to go to the Mundialis web portal:
<https://www.mundialis.de/en/>
2. Click the SERVICES tab and Web Map Services from the drop down to enter the Web Maps section.

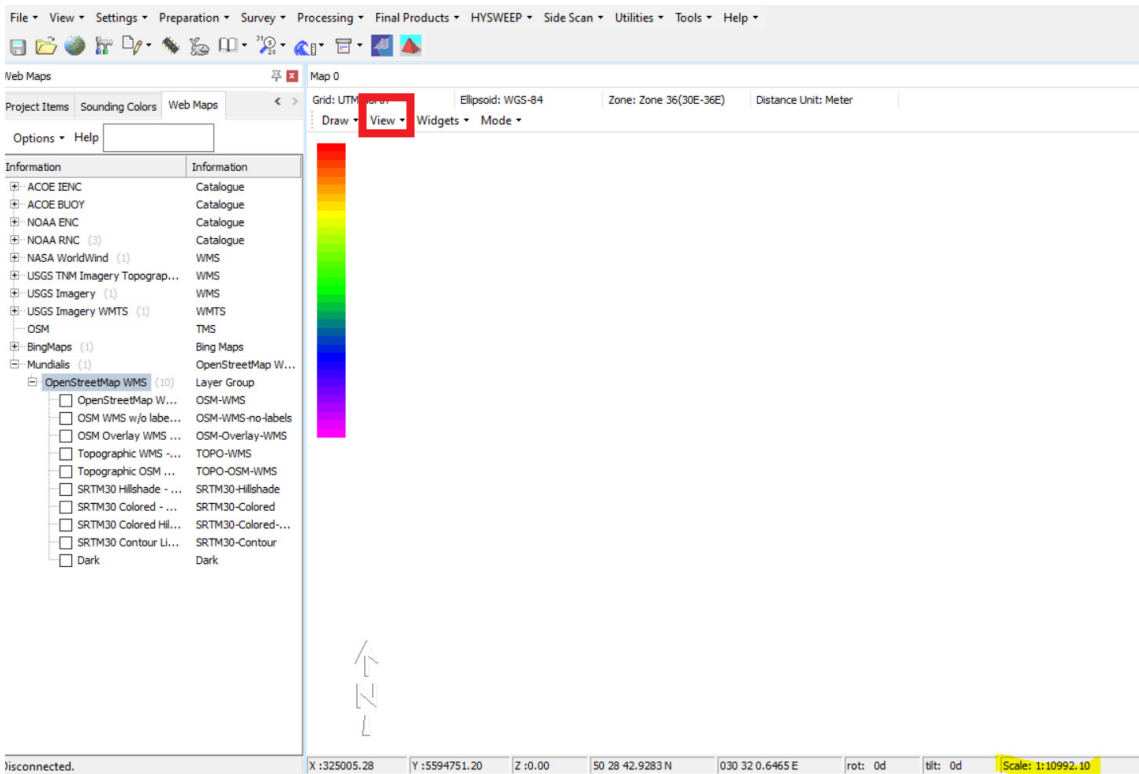


3. Copy the service URL link.
4. Open HYPACK® and click View -> WMS Web Maps to open the Web Maps tab. Click Options -> Add Server and enter the following information:
 - > Display Name - type any name you want for the server. Remember this name for Step 8. In this example, we've named the server "Mundialis".
 - > Service Type is WMS.
 - > URL- paste the one you get in Step 2.

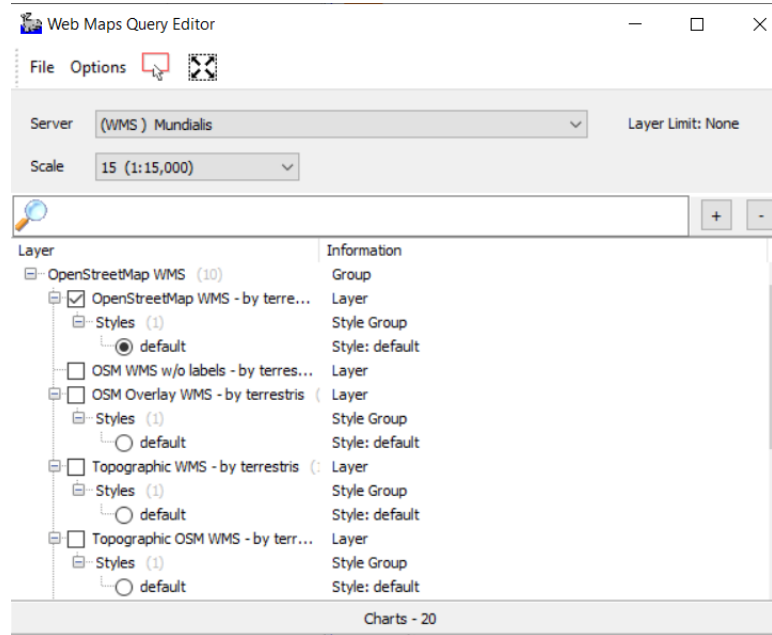
- > Click [Test Connection] - make sure you get the response from the server as shown below.



- 5. In the Map window, zoom in on the location of your survey area. In case you have no idea where it is, check your GPS for the coordinates you are at or check Google Earth. Then, in the View menu (boxed in red) in the Map window, click the Go to Position option and enter coordinates of the center of survey area. Zoom to include all of survey area and note the scale at the bottom of the Map window. In my case it is 1:10000, which is highlighted with the yellow swipe on the bottom left in the figure below.

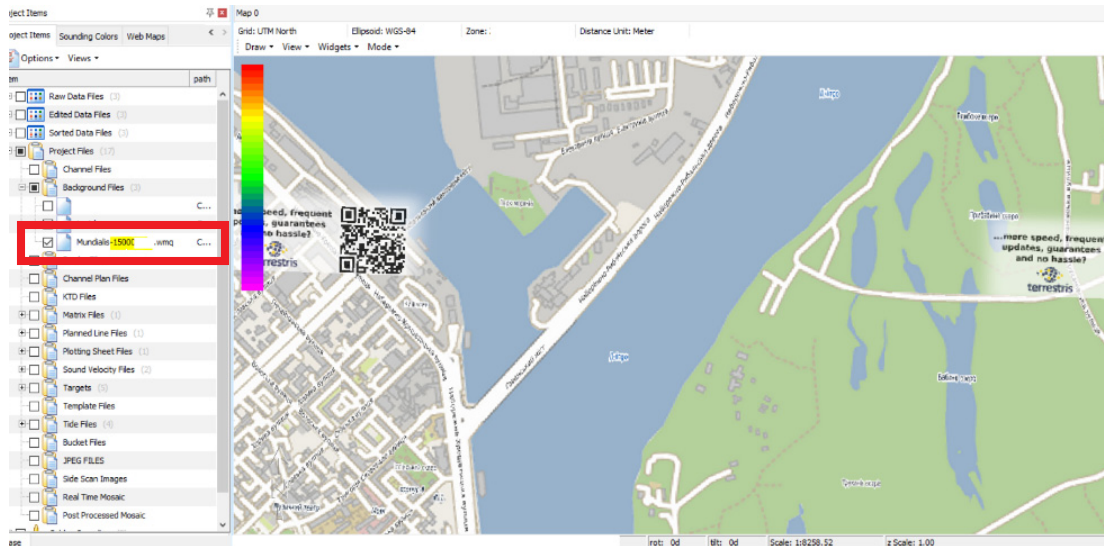


- Run the Web Map Query Editor by clicking Preparation -> Editors -> Web Maps Editor.



- The editor will draw a blue rectangle in the Map window covering it fully. You can click the red rectangle icon at the top of the editor and draw a new area to get the WMS charts for it.
- From the Server drop down list, select the (WMS) Mundialis server (or what you named your server in Step 4). Select the appropriate Scale. At the bottom of the editor you can see number of charts to be downloaded - I usually try to keep it at a maximum of 50 charts. If it is more, it may take much longer to build the background. You can either zoom in more in the Map window or select a smaller scale.
- Check the Layer of the WMS - I like the Open Street WMS as in the image above.
- Save the WMQ file from File -> Save As. The WMQ file will be store in the C:\HYPACK Store\WMS folder on your computer and can be accessible from any project on this PC.
- Go to Options -> Download the Charts. The program will start downloading the charts for you. You may wait until you see all the charts are downloaded.

12. Close the editor. You should see the resulting WMQ file in the Project Items List under Background Files.



13. The resulting WMS chart will be placed on top of everything else. You may want to move it to the back - right click on the WMQ file in the list and select the Send to Back option.