

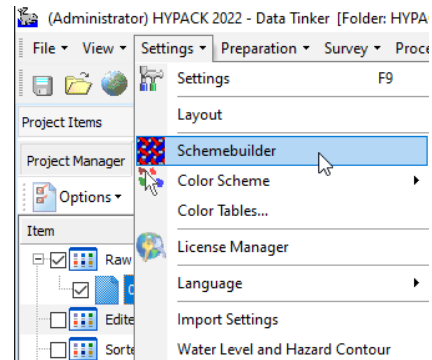


# Configuring the appearance of HYPACK Survey with SCHEMEBUILDER

By Josh Sampey

I have recently been out on a couple training sessions and have heard complaints about the colors of planned lines or other items in the Survey Map window. The complaint is often that the red arrows of the run line blend into the matrix file or the background image, making them hard to see. If you have encountered this or other display issues we have a powerful but underutilized, little known tool that will allow you to configure the appearance of many items in HYPACK Survey. SchemeBuilder allows you to change the appearance of items in survey to suit your needs.

Schemebuilder can be found in the settings dropdown.



Once opened you will be able to change the appearance of many items that appear in the Survey Map windows. Each window can be independently configured, so there can be differences for helm and surveyor windows.

**Survey window selection**  
- Allows for different settings for surveyor and helm windows

**Map element selection**  
- Select the map elements you wish to edit. Specific sub elements can be changed by clicking the arrows next to each map element

**Formatting options**  
-Change the colors, fonts, line thickness etc. for the selected element. In this case we can change the color and line width of the CMG vector. Any configurable option for the selected item will appear in this section

