



HYPACK
a xylem brand

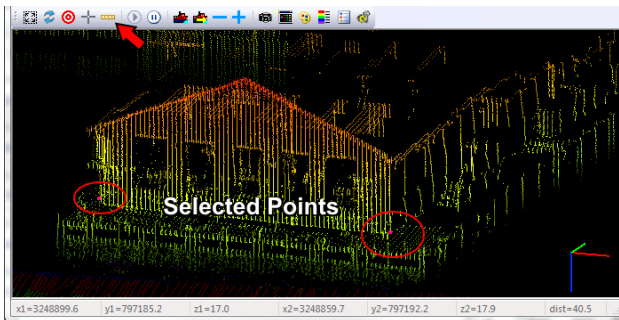
Sounding Better!

Additions to Real Time Cloud

By Ken Aiken

Recently I've been working on adding a few new features to Real Time Cloud. I've added the ability to measure distance between points, the ability to color points by intensity, and the ability to clip which points are displayed using a channel file.

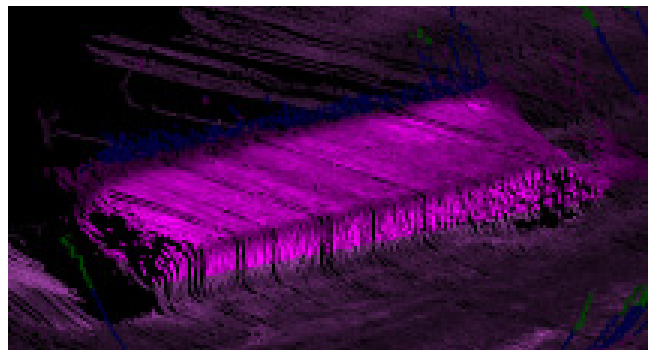
THE MEASUREMENT TOOL



The Measurement tool will measure between 2 selected points giving you the XYZ of both points and the distance between them in the bottom status bar of the window. The points are marks by larger red points.

COLOR BY INTENSITY

In the menu bar under VIEW-COLOR METHOD there is the new ability to color the points by their return intensity. Or similar to Cloud you can color them using depth and intensity by using the depth color scheme for the color and using the minimum and maximum of the intensity color scheme to lighten and darken the point. The end result being that, with 2 points at the same depth by different return intensity, the more intense point will be brighter than the point with a smaller return intensity.



CLIPPING WITH A CHANNEL FILE

The third new change to REAL TIME CLOUD is the ability to clip displayed points using a channel file. This allows you to see the points either above or below your CHN file assisting in quality management. It also has the option to draw the selected file. The channel is translucent so you can still see the points on the other side if you choose to clip above it.

