



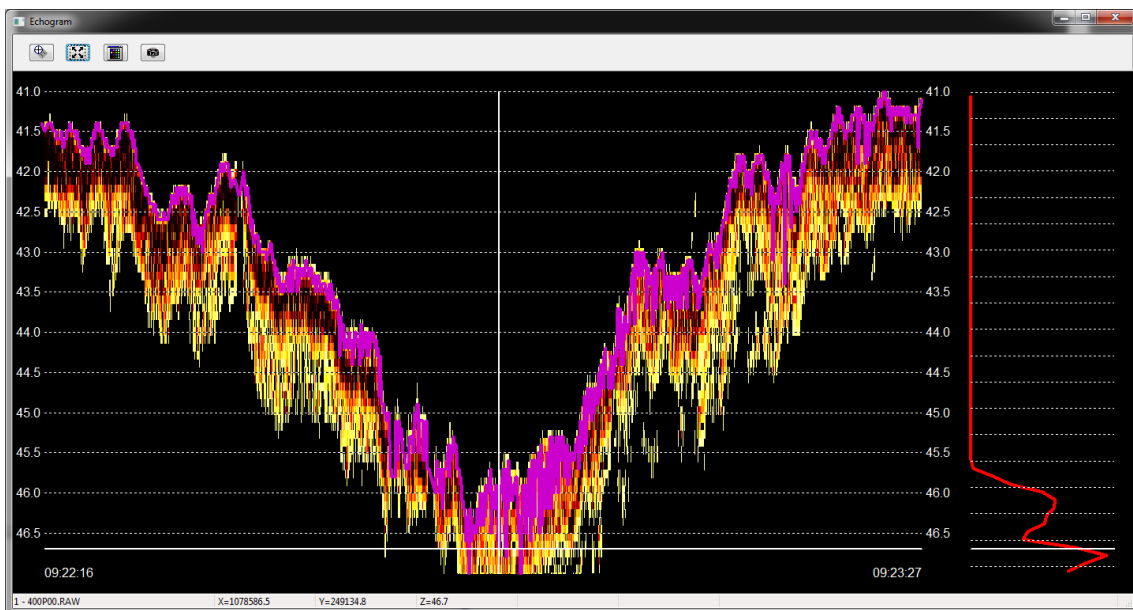
Echogram and Overlays in SBMAX64

by Joseph Adamski

After the original release of SBMAX64, we've been working on adding the other features present in the original SBMAX. The biggest of these are the Echogram window and support for Overlays. Additionally, there have been many behind-the-scenes changes of the code to ensure a better user experience and greater stability.

ECHOGRAM WINDOW

FIGURE 1. Echogram Window



The Echogram window becomes available when loading a RAW file that has an accompanying *.BIN file. Using the digitizing tool, you can align the soundings with the analog data. The echogram can be controlled similarly to the profile window: the mouse wheel zooms at the current cursor position, and right-click + drag pans the display.

OVERLAYS

Overlays allow you to display edited data with the raw data in the Profile main Survey windows.

To use the feature, open the overlay set-up dialog (FILE-> OVERLAYS). Up to 3 overlay files can be chosen for each of the raw files in the dialog.

FIGURE 2. *Overlay Dialog*

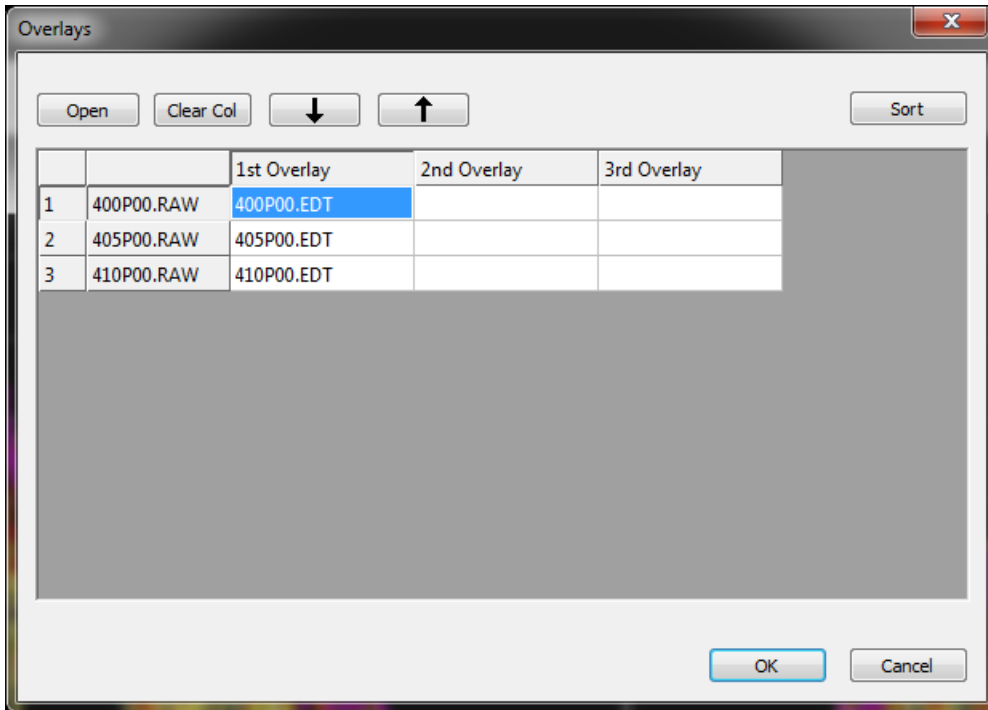


FIGURE 3. *Profile with Overlays Displayed*

