



HYPACK Magnetometer Layback Adjustments

by Christian Shaw

Many times the layback for magnetometers was incorrect when data was collected. This was only realized when the surveyor has overlaid the data on top of a nautical chart, or it simply was not accounted for during data collection. The means by which layback on a towfish is applied in HYPACK® SURVEY is with the Towfish device driver. The Towfish.dll uses the cable payout and any catenary factor to layback a fish to its appropriate position. The driver, in itself, could be another newsletter article and has been covered in the past. If towing a fish, you want to pay close attention to this window in real-time, while surveying with HYPACK® SURVEY.

FIGURE 1. Towfish Driver Window

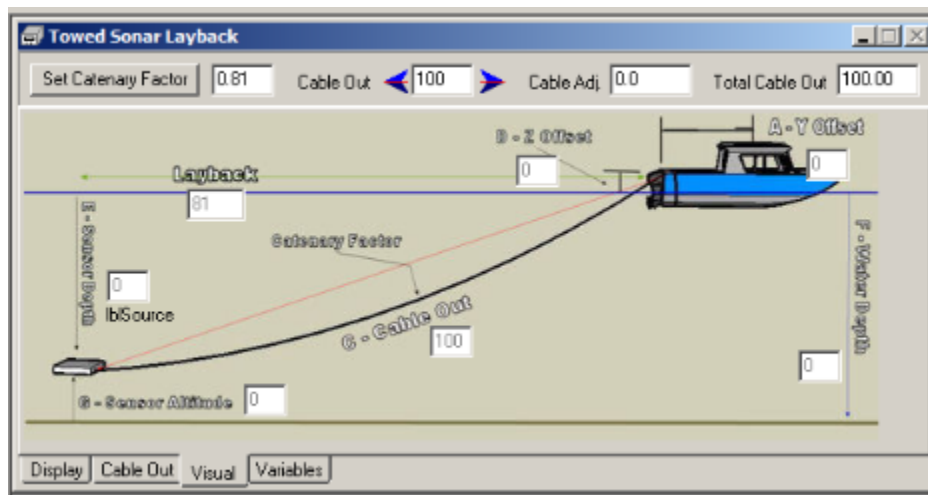
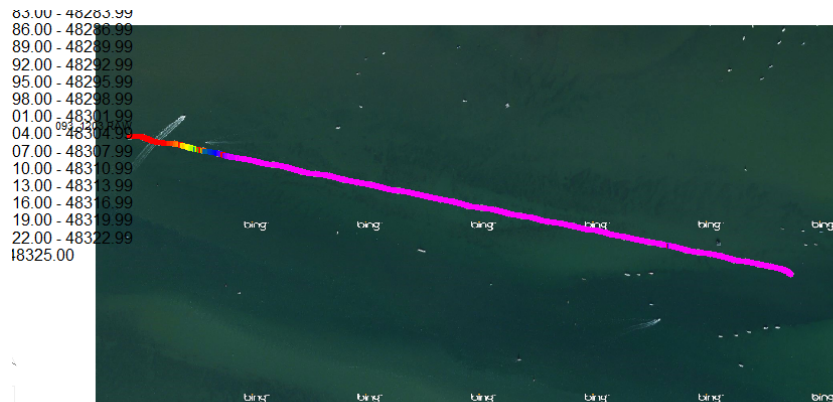
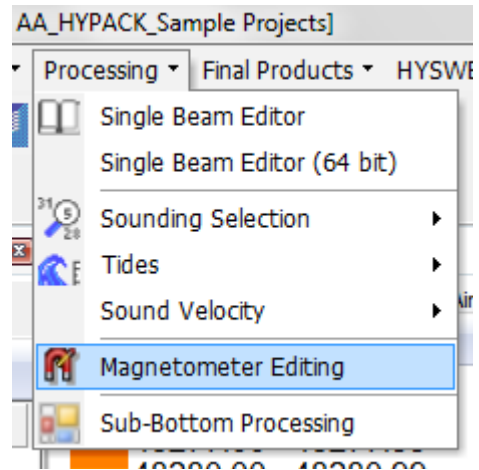
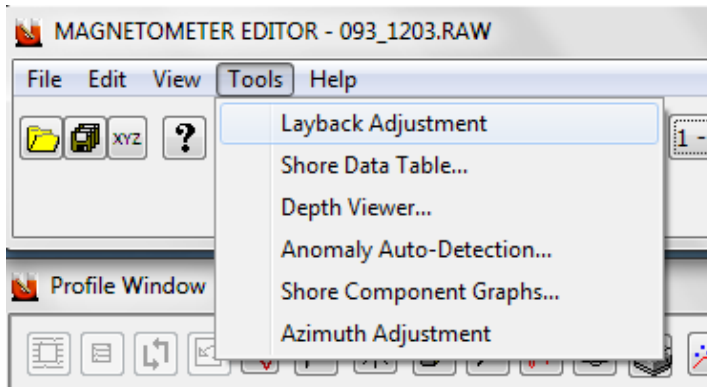


FIGURE 2. RAW Magnetometer Data

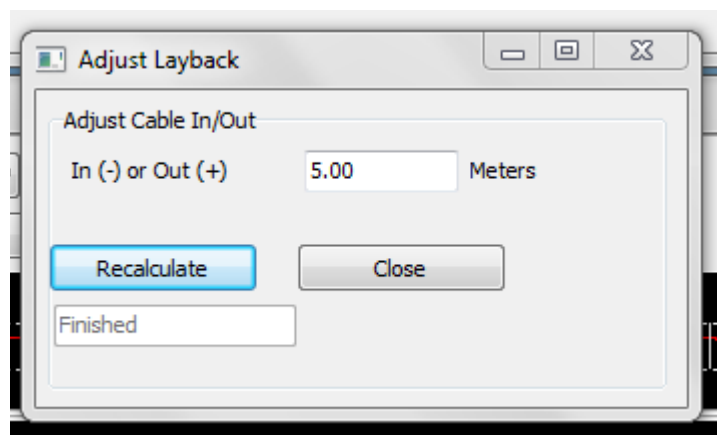


If there are issues with the towfish layback, and you need to adjust the data, you can do so in the MAGNETOMETER EDITOR:

1. **Open RAW Magnetometer data in the Editor.**
2. **Select TOOLS-LAYBACK ADJUSTMENT.** The Adjust Layback dialog appears.



3. **Enter a new cable adjustment and click [Recalculate].** When the process is finished, it will tell you it has done so.



To ensure that the program has done its job with the layback adjustment, you can overlay the RAW data files in the HYPACK® Map window with the edited data saved from theMAGNETOMETER EDITOR. You should clearly see a shift:

FIGURE 3. Comparing the Layback in RAW vs Edited Data

