



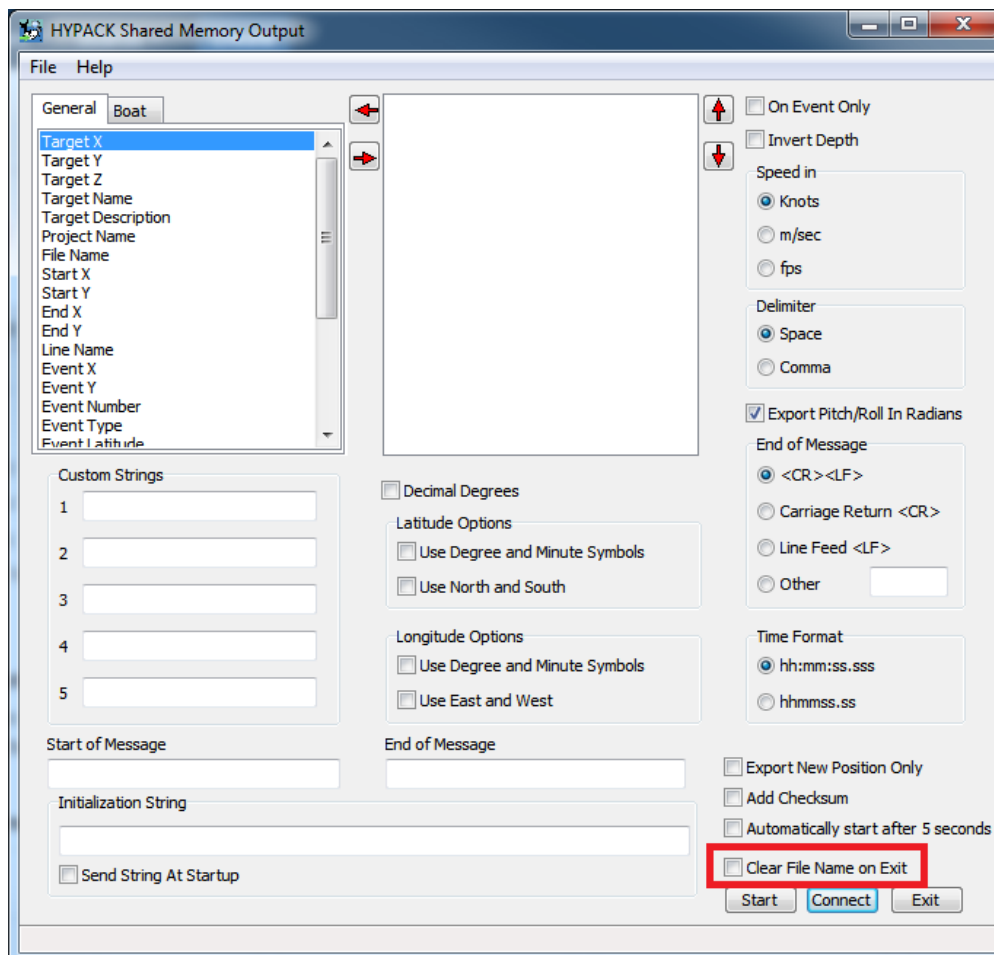
Shared Memory Output Features

By Connor MacDonald

CLEAR FILE NAME OPTION

There is now a checkbox that will clear the previous connection settings next time the Shared Memory Output program is opened. This helps you ensure a unique filename is chosen each time the program is run.

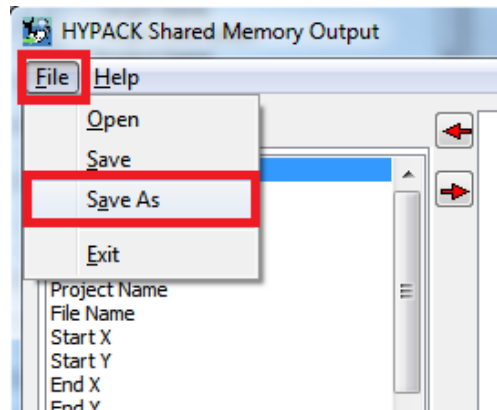
FIGURE 1. Shared Memory Output Interface



CONFIGURATIONS NOW STORED IN THE PROJECT FOLDER

Shared Memory Output configurations used to be stored in an INI file in the HYPACK® directory. New projects will now store the INI file in the respective project directory so that projects can have different configurations.

To store the INI file from an old project in the project directory, select File-SAVE AS from the menu.



The project directory will be the new default Save As directory.

