



Subtle Changes to the Image Geo Reference Editor

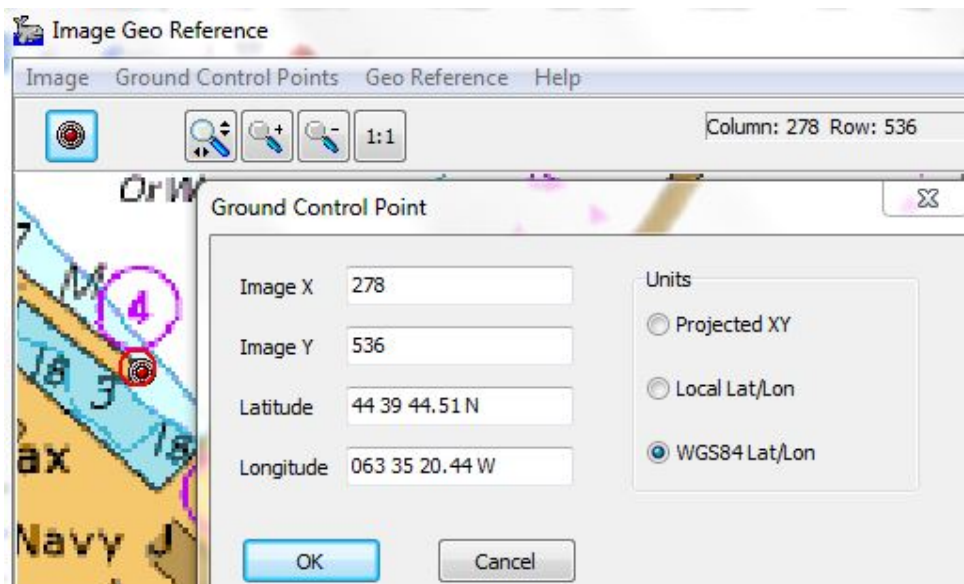
By Rob Baird

We have recently received a few phone calls in Tech. Support about the IMAGE GEOREFERENCE EDITOR, since a few slight changes were made to the program in HYPACK® 2017. While the editor still performs the same functions at its predecessors, several operations are initiated differently than before.

SETTING GROUND CONTROL POINTS

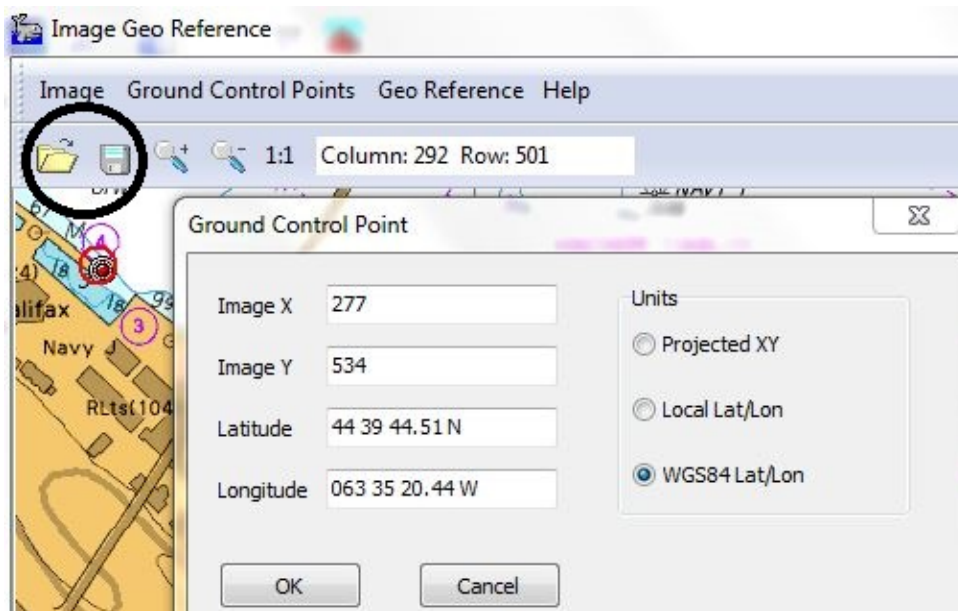
Previous versions of this editor required you to select the bullseye icon, then double-click to place a Ground Control point (GCP).

FIGURE 1. IMAGE GEOREFERENCE EDITOR in HYPACK® 2016:



The HYPACK® 2017 IMAGE GEOREFERENCE EDITOR is shown below. The bullseye icon is now gone, so you must now right-click on location to add ground control points.

FIGURE 2. The HYPACK® 2017 IMAGE GEOREFERENCE EDITOR



NEW ICONS

Another subtle difference is the presence of two new icons, shown circled in Figure 2.

The **manila folder** icon allows you to load an image, while the **hard disk** icon allows you to Save the georeferenced TIF file. These operations are also still available in the Image menu options.

EDITING GROUND CONTROL POINTS

Earlier editors allowed you to edit the ground control points by double-clicking on each point; however, the 2017 editor requires you to right-click, then select “Edit GCP” to open the Ground Control Point window.