



HYPACK
a xylem brand

Sounding Better!

Target Database in HYPACK® 2015 and HYPACK® 2016

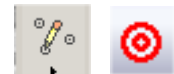
By Caryn Zacharias

In Support, we get a number of calls and e-mails regarding the Target Database in HYPACK® 2015 and 2016. The big difference between previous HYPACK® versions and now is, instead of individual Target files (.TGT), each project contains a Target Database File (Target.db). Within the database, you will find groups. You can create more groups or just use the defaults. Each HYPACK® program automatically creates a group when targets are made in that program.

You can still create targets in the shell using the cursor or entering target coordinates in the TARGET EDITOR. You can also import or export targets from/to a .TXT or a .TGT file. See below for more in-depth information.

CREATING TARGETS IN THE SHELL

FIGURE 1. HYPACK® 2015 Icon (left), HYPACK® 2016 Icon (right)

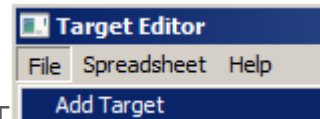
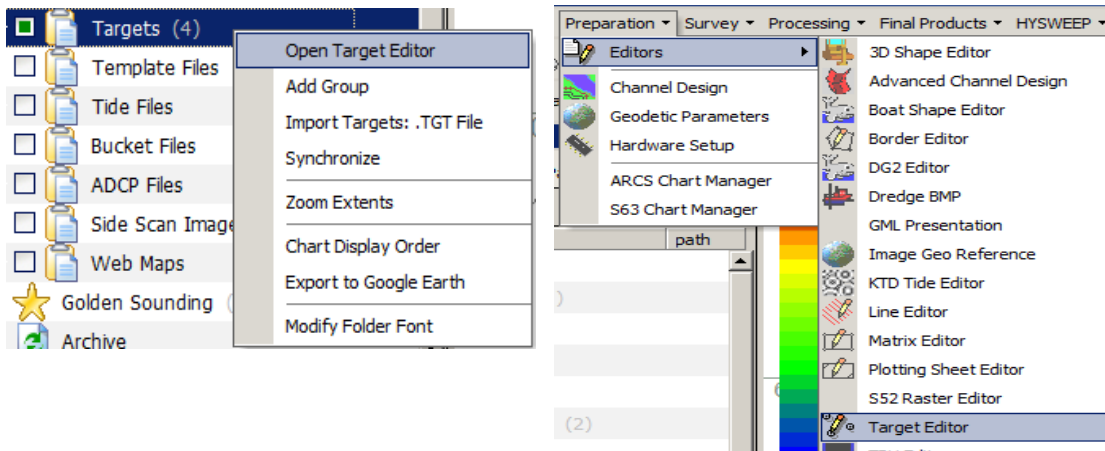


Click on the icon located in the Map View Tools (on the right-hand side of the screen). The cursor in the Map window will change to a cross and triangle; just a single click in the map window creates a target. Under Project Items – Project Files – Targets a “Shell” Group is automatically created and starts populating with targets.

CREATING TARGETS IN TARGET EDITOR

1. **Open the TARGET EDITOR:** Right-click on “Targets” or the actual Target Groups in the Project Files List OR select PREPARATION – EDITORS.

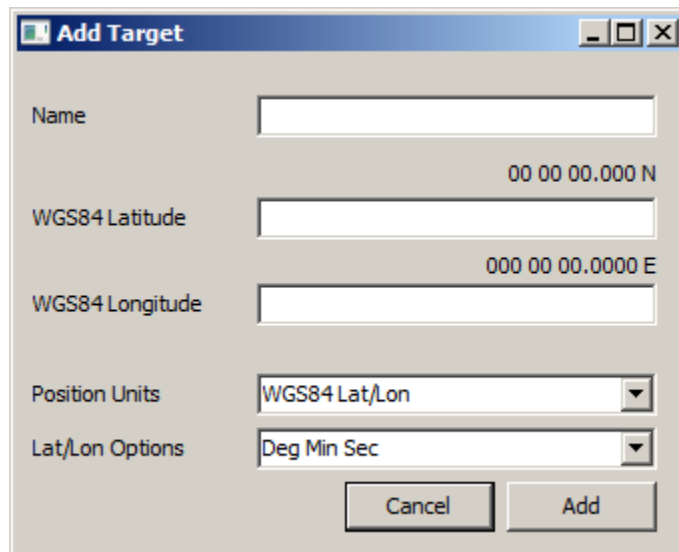
FIGURE 2. Shell: Right-click Targets: OPEN TARGET EDITOR (left), Menu: PREPARATION – TARGET EDITOR (right)



2. **Add targets in TARGET EDITOR: FILE – ADD TARGET** or

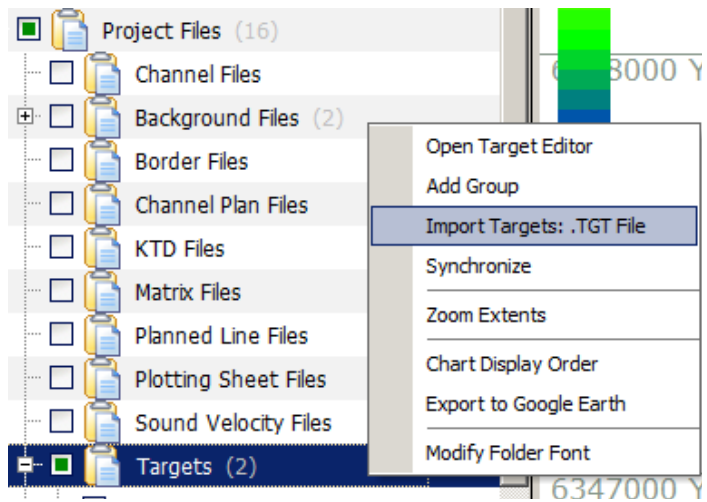


3. **Enter the Name of the target, and Lat/Long or X/Y**
 - Use the drop-down to change between Local Lat/Long, WGS84 Lat/Long and X/Y.
 - Use the drop-down to change between Decimal Degrees, Degrees Minutes, and Degrees Minutes Seconds.
4. **Click [Add].**



IMPORTING *.TXT AND *.TGT FILES

- Using the SHELL to Import *.TGT Files:
 - a. Right-click on “Targets” and select “Import Targets: TGT.File”.
 - b. Browse to the *.TGT. A new group (with the *.TGT name) should now be listed under Targets.



- Using the TARGET EDITOR to Import *.TGT Files:
 - FILE – IMPORT TARGET FILE.
- Using the SHELL to Import *.TXT Files (The TARGET EDITOR does not have an import *.TXT option):
 - a. Right-click Target Groups and select “Import Targets: TXT.File”. The Import Targets window opens.
 - b. Open the file.
 - c. Select the information to import, set the delimiter and units.
 - d. Check Syntax.
 - e. If everything is good click [Convert...].

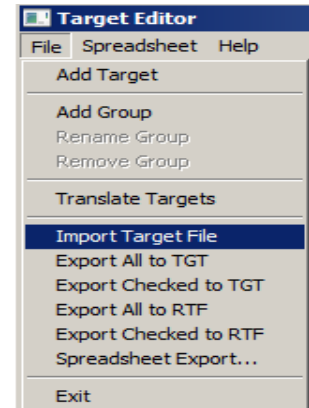
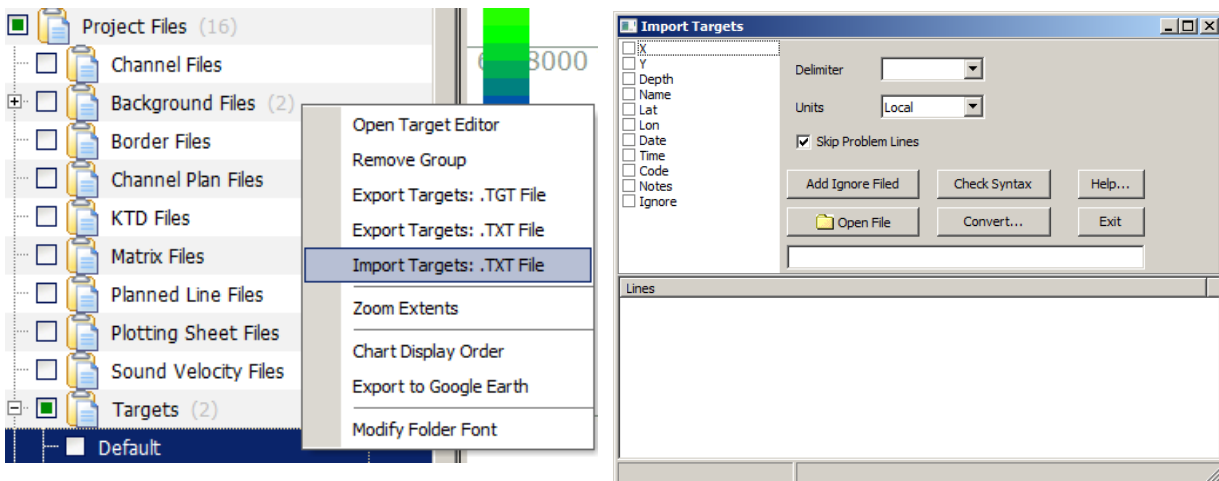


FIGURE 3. Importing a *.TXT File from the HYPACK® Shell

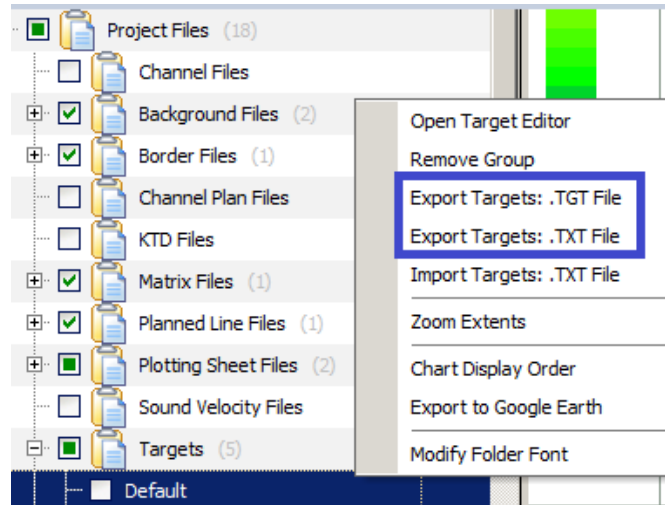


EXPORTING *.TXT, *.TGT AND OTHER FILE TYPES

(In the Shell and TARGET EDITOR)

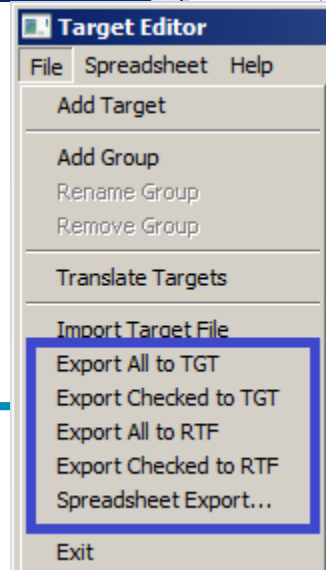
- Using the SHELL to Export *.TGT Files:

- Right-click on the Target Group to be exported and select “Export Targets: TGT.File” or “Export Targets: TXT.File”.
- Save the *.TGT file.



- Using the TARGET EDITOR to Export *.TGT Files, *.RTF or *.CSV:

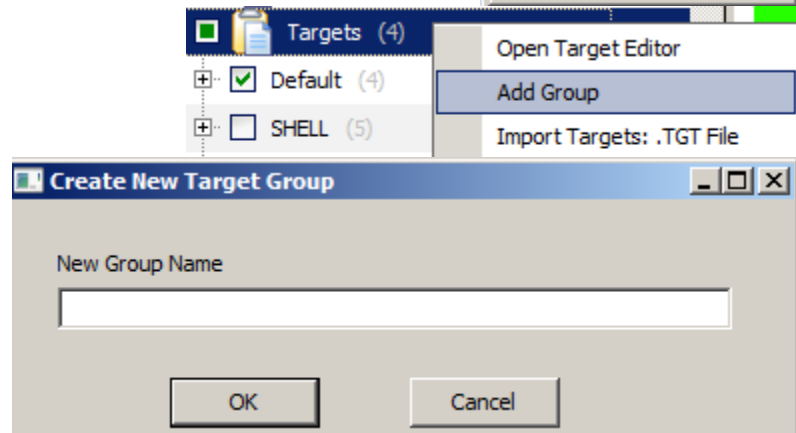
- Select FILE and choose your “Export...” option.
 - If you only want to export select targets, select those targets and then choose “Export Checked to TGT” or “Export Checked to RTF”.
 - If you’re exporting all targets, choose “Export All to TGT”, “Export All to RTF” or “Spreadsheet Export...”.
- Save the *.TGT, *.RTF or *.CSV file.



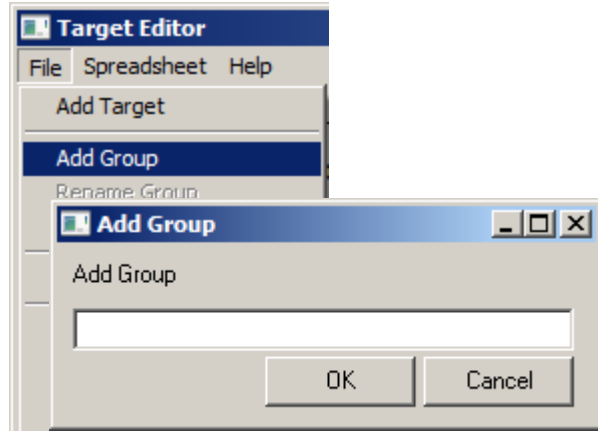
CREATING GROUPS

- Using the SHELL to Create Groups:

- Right-click on the Targets and select “Add Group”.
- Enter Group Name and click [OK].

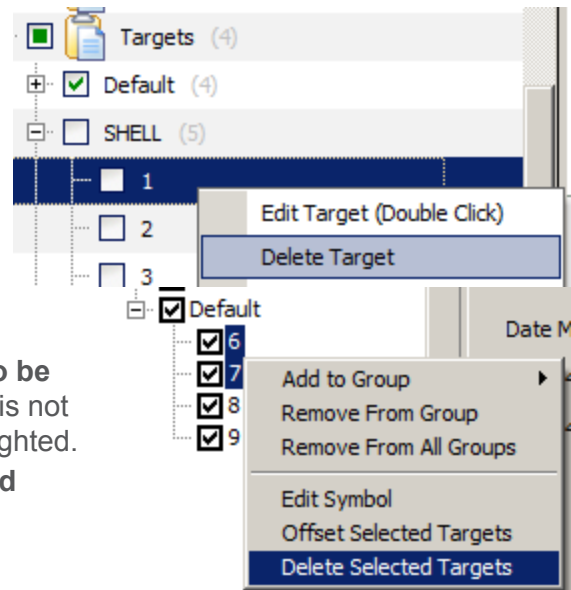


- Using the TARGET EDITOR to Create Groups:
 - a. Select FILE – ADD GROUP.
 - b. Enter Group Name and click [OK].



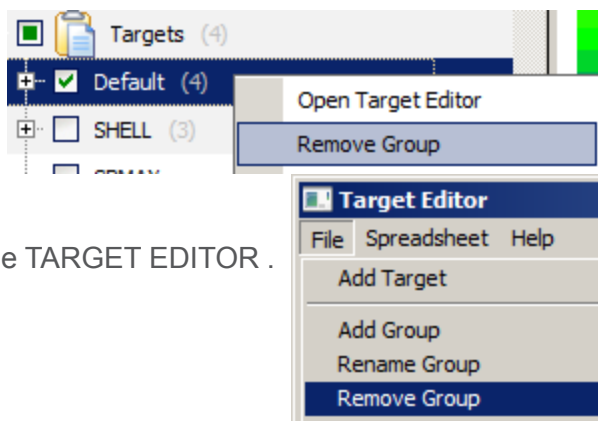
DELETING TARGETS

- Using the SHELL to Delete Targets:
 - a. Highlight the actual target or targets.
 - b. Right-click and select “Delete Target”.
- Using the TARGET EDITOR to Delete Targets:
 - a. Highlight the actual target or targets to be deleted. A check mark next to the target is not selecting the target. Make sure it is highlighted.
 - b. Right- click and select “Delete Selected Targets”.



DELETING/REMOVING GROUPS

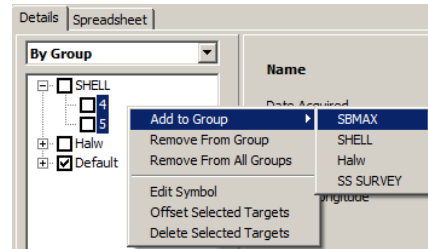
- Using the SHELL to Remove Groups:
 - a. Right click on the Target to be removed.
 - b. Select ‘Remove Group’.
- Using the TARGET EDITOR to Remove Groups:
 - a. Select the Group to be removed in the TARGET EDITOR .
 - b. Select FILE – REMOVE GROUP.



ADD TARGETS TO GROUPS

(Add specific targets to different groups.)

1. **Highlight the target or targets in the TARGET EDITOR.**
2. **Right-click the selected targets and choose “Add to Group”.** A list of all the groups available will be listed.
3. **Select the group to which you want to add the targets.** This retains the target in the current group as well as adding the target to the new group.



NOTE: To remove targets in the initial group: highlight the targets, right-click and choose “Remove From Group”.

I hope this additional information on the TARGET EDITOR and Targets in the shell answer some of your questions. Please contact help@hypack.com if you have additional questions or concerns.